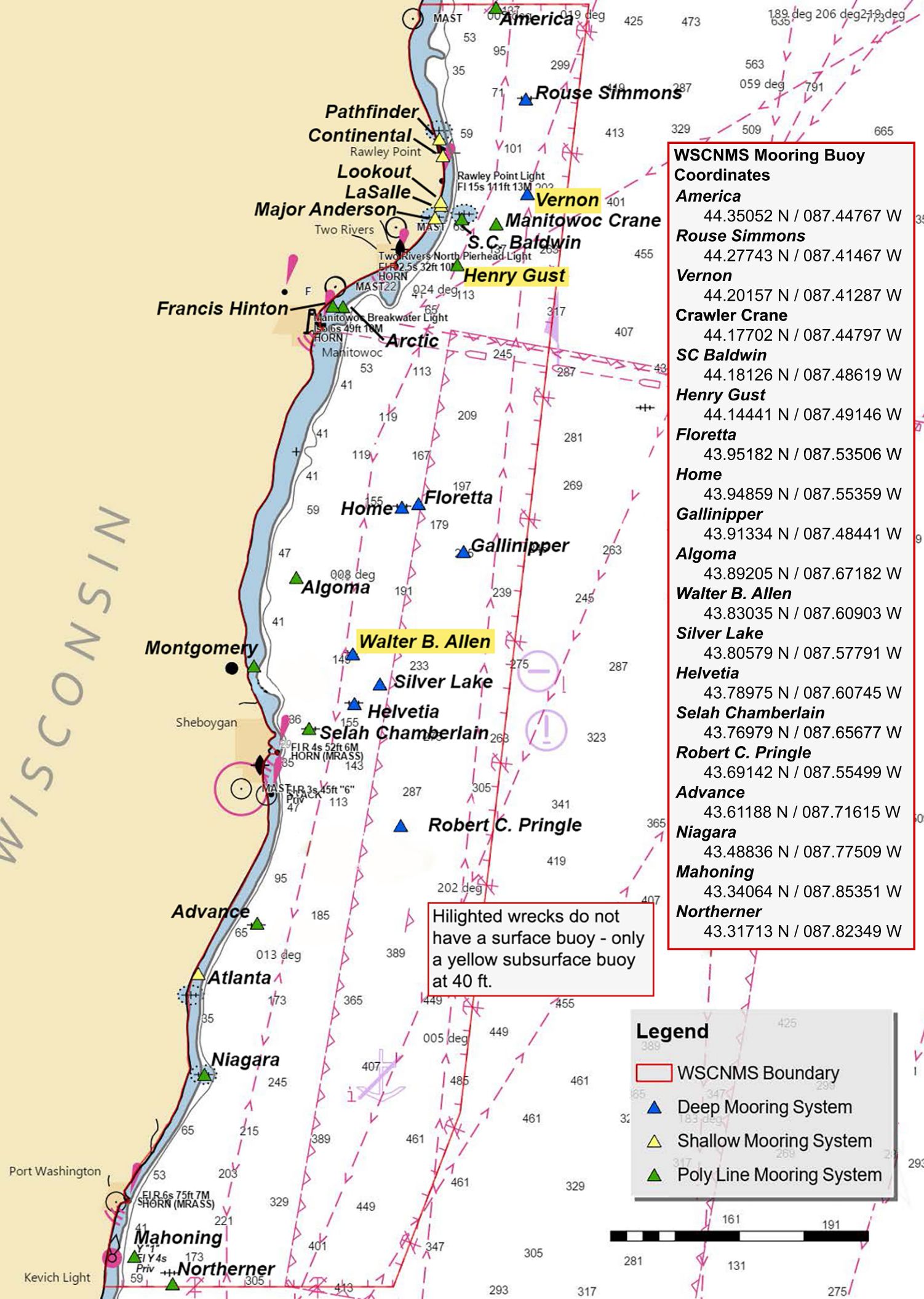


WISCONSIN



**WSCNMS Mooring Buoy Coordinates**

Mooring Buoy Name	Coordinates
<b>America</b>	44.35052 N / 087.44767 W
<b>Rouse Simmons</b>	44.27743 N / 087.41467 W
<b>Vernon</b>	44.20157 N / 087.41287 W
<b>Crawler Crane</b>	44.17702 N / 087.44797 W
<b>SC Baldwin</b>	44.18126 N / 087.48619 W
<b>Henry Gust</b>	44.14441 N / 087.49146 W
<b>Floretta</b>	43.95182 N / 087.53506 W
<b>Home</b>	43.94859 N / 087.55359 W
<b>Gallinipper</b>	43.91334 N / 087.48441 W
<b>Algoma</b>	43.89205 N / 087.67182 W
<b>Walter B. Allen</b>	43.83035 N / 087.60903 W
<b>Silver Lake</b>	43.80579 N / 087.57791 W
<b>Helvetia</b>	43.78975 N / 087.60745 W
<b>Selah Chamberlain</b>	43.76979 N / 087.65677 W
<b>Robert C. Pringle</b>	43.69142 N / 087.55499 W
<b>Advance</b>	43.61188 N / 087.71615 W
<b>Niagara</b>	43.48836 N / 087.77509 W
<b>Mahoning</b>	43.34064 N / 087.85351 W
<b>Northerner</b>	43.31713 N / 087.82349 W

Hilighted wrecks do not have a surface buoy - only a yellow subsurface buoy at 40 ft.

**Legend**

- WSCNMS Boundary
- ▲ Deep Mooring System
- ▲ Shallow Mooring System
- ▲ Poly Line Mooring System

