



Photo: NOAA

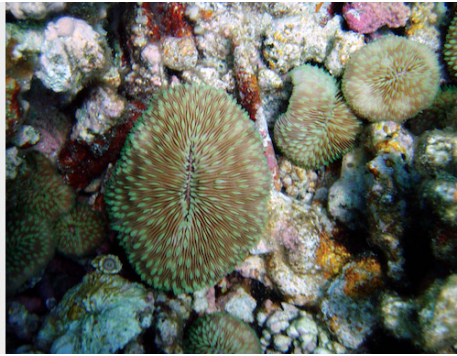


Photo: Claire Fackler/NOAA



Photo: Greg McFall/NOAA

Coral Check-Up Lesson Series Webinar Links

50 Years of Ocean and Coastal Conservation

<https://www.noaa.gov/50-years-ocean-coastal-conservation>

In 1972, in response to growing public concern about the state of our environment, Congress enacted banner legislation designed to protect our nation's ocean and coasts: Clean Water Act, Marine Mammal Protection Act, Coastal Zone Management Act, and National Marine Sanctuaries Act.

National Marine Sanctuaries 50 Year Anniversary

<https://sanctuaries.noaa.gov/50>

Nearly fifty years ago, a new era of ocean conservation was born by creating a system of national marine sanctuaries. Since then, the National Marine Sanctuary System has grown into a nationwide network of 15 national marine sanctuaries and two marine national monuments that conserve more than 620,000 square miles of spectacular ocean and Great Lakes waters, an area nearly the size of Alaska.

Papahānaumokuākea National Marine Monument

<https://www.papahanaumokuakea.gov>

Papahānaumokuākea Marine National Monument is the largest contiguous fully protected conservation area under the U.S. flag, and one of the largest marine conservation areas in the world. It encompasses 582,578 square miles of the Pacific Ocean (1,508,870 square kilometers) - an area larger than all the country's national parks combined.

National Marine Sanctuary Designation for Papahānaumokuākea

<https://www.papahanaumokuakea.gov/sanctuary-designation>

NOAA's Office of National Marine Sanctuaries is initiating the process to consider designating marine portions of Papahānaumokuākea Marine National Monument as a national marine sanctuary under the National Marine Sanctuaries Act.

Deep Ocean Education Project

<https://deepoceaneducation.org>

The Deep Ocean Education Project is a resource hub that provides access to ocean exploration-based learning for educators, students, and anyone else interested in learning more about our deep ocean. NOAA Ocean Exploration, Ocean Exploration Trust (OET), and Schmidt Ocean Institute (SOI) are collaborating to share highlights of each organization's education materials, videos, and other information about the deep ocean in one location.

Exploration Vessel Nautilus Live!

<https://nautiluslive.org>

Ocean Exploration Trust and the Nautilus Exploration Program seek out new discoveries in geology, biology, and archaeology while conducting scientific exploration of the seafloor. Our expeditions launch aboard Exploration Vessel Nautilus — a 68-meter research ship equipped with live-streaming underwater vehicles for scientists, students, and the public to explore the deep sea from anywhere in the world.

<https://nautiluslive.org/education/ship-to-shore-interactions>

Ship-to-shore interactions are one-on-one live video Q&A broadcasts with the Corps of Exploration to learn more about life onboard the ship and the latest discoveries on Earth. Interactions are free to classrooms and camps and scheduled 7 days a week to meet your needs.

Papahānaumokuākea Educational Materials

<https://www.papahanaumokuakea.gov/new-education/curriculum>

The following lessons and curricula are free to download and utilize in your classroom or as an online learning experience.

Links specific to the Coral Check-Up Lesson Series

<https://www.papahanaumokuakea.gov/new-education/curriculum/coral-lessons>

Mokupāpapa Discovery Center Coral Lesson: <https://www.papahanaumokuakea.gov/mdc/coral-lesson>

NOAA Data in the Classroom: <https://dataintheclassroom.noaa.gov>

NOAA Coral Reef Watch: <https://coralreefwatch.noaa.gov>

NOAA Ocean Today Videos: <https://oceantoday.noaa.gov/every-full-moon/welcome.html>

Coral Reef Ecosystems Resource Collection: <https://sanctuaries.noaa.gov/education/teachers/coral-reef>

Coral Bleaching Infographic: https://oceanservice.noaa.gov/facts/coral_bleach.html

Coral Health Atlas: <https://hilo.hawaii.edu/coralhealth>

Papahānaumokuākea Flickr Account: <https://www.flickr.com/photos/papahanaumokuakea>

<https://papahanaumokuakea.gov>