

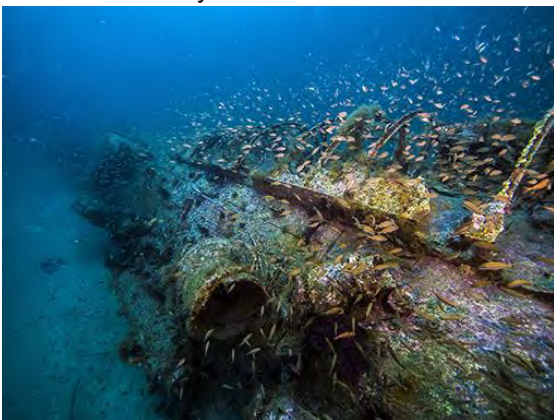


Shipwrecks: Virtual Reality Fact Sheet

This fact sheet is associated with the [Shipwreck Alley](#) and [St. Peter](#) VR Videos.



The shipwreck rests in Thunder Bay National Marine Sanctuary. Photo: Nick Zachar/NOAA



A sunken U-Boat from WWII lies near Monitor National Marine Sanctuary. Photo: NOAA



Plants grow on wooden shipwrecks in Mallows Bay-Potomac River National Marine Sanctuary. Photo: NOAA

1. Lake Huron, one of the Great Lakes, is the second largest Great Lake by surface area, after Lake Superior.
2. The bow of a ship is the forward part of the ship in the direction its heading; the stern of a ship is the back of it.
3. The cold freshwater of the Great Lakes protects the wooden parts of the *D.M. Wilson* and *St. Peter* shipwrecks, even after all the years underwater.
4. Thunder Bay National Marine Sanctuary protects almost 100 shipwrecks off the coast of Michigan.
5. The proposed Lake Ontario National Marine Sanctuary would protect both shipwrecks and sunken aircraft.
6. There are five Great Lakes. An easy way to remember them is “H.O.M.E.S.” — Huron, Ontario, Michigan, Erie, and Superior.
7. Both *D.M. Wilson* and *St. Peter* were carrying coal, a fossil fuel used for manufacturing, transportation, and heating.
8. Maritime archaeology is the study of past human cultures with an emphasis on how humans interacted with the world’s ocean, lakes, and river systems. Shipwrecks are part of this history.