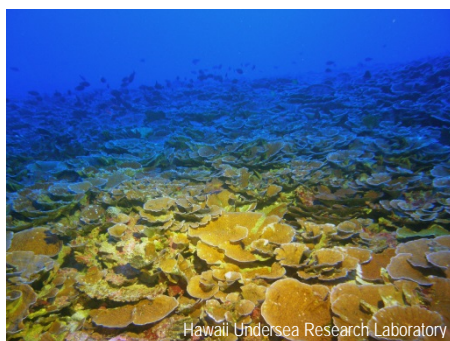


2013 ACCOMPLISHMENTS



NATURALIST GUIDES, PROGRAMS AND MORE

The sanctuary's partnership with Turtle Bay Resort on O'ahu has expanded to offer outreach opportunities to guests, local visitors and resort staff. Activities include education booths and talks during whale season, training sessions for hotel staff, and Ocean Awareness Training for Turtle Bay Resort Guides. Also, back by popular demand, the sanctuary coordinated the North Shore Ocean Fest and the Welcome Back Whales event at Turtle Bay with outreach booths, NOAA lecture series, children's activities, wildlife walks, and many more activities.



UNDERSTANDING MESOPHOTIC CORAL

The sanctuary partnered with researchers from various state and federal agencies in order to develop a predictive model of mesophotic coral distributions in the 'Au'au Channel off of Maui. These unique habitats are largely unexplored and, in addition to their distinct attributes, may serve as refugia for shallow water fish and coral reef species. The sanctuary completed an extensive evaluation to inform the development of effective management approaches and protection for these unique ecosystems. Within federal waters, these fragile environments are currently unmanaged and unprotected.



PROMOTING PONO FISHING PRACTICES

The sanctuary hosted for the first time the Sanctuary Classic in Hawai'i, a summer-long, fishing and photo competition, so as to promote safe and responsible (pono) fishing practices and perpetuate the transfer of knowledge to sustain our marine resources from one generation to the next. Multiple events that featured hands-on activities about sustainable and traditional fishing practices were offered on the islands of Kaua'i, Maui and O'ahu. Keiki and their families participated in throw-net demonstrations, barbless hook making, interpretation of spawning cycles and many other activities.

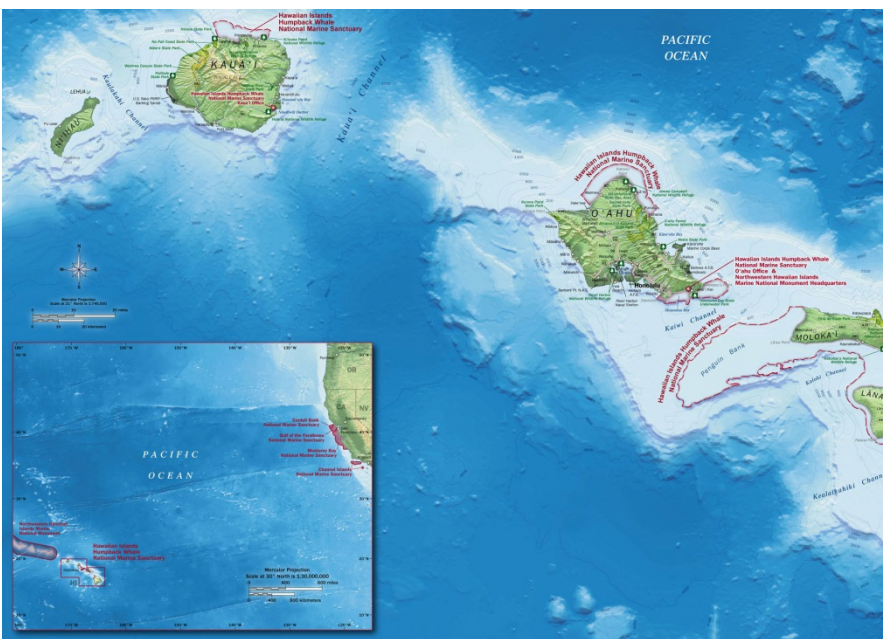


IDENTIFYING OCEAN TIPPING POINTS

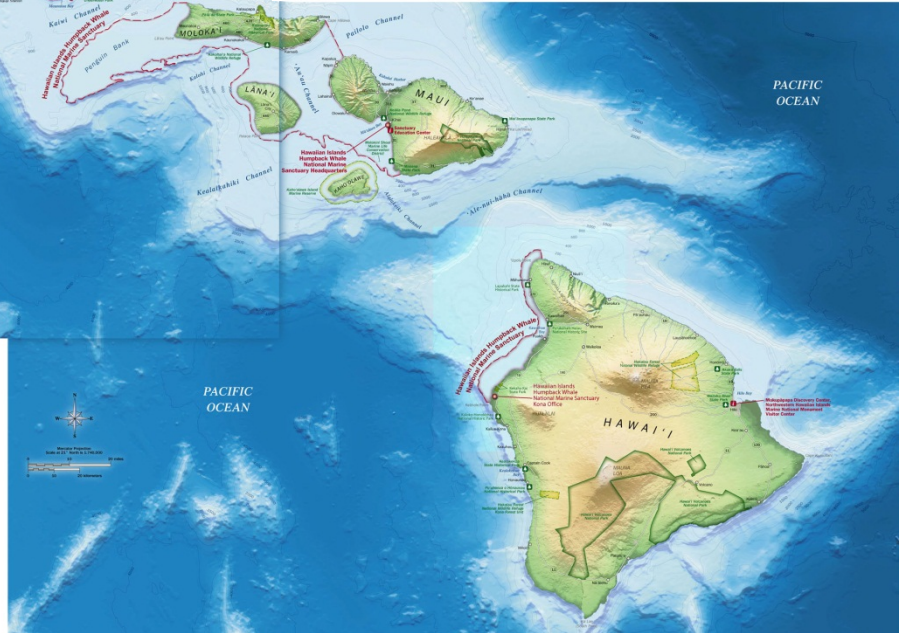
The sanctuary was selected as one of two pilot sites for Stanford University's Center for Ocean Solutions initiative, *Ocean Tipping Points*. This four-year project, funded by the Moore Foundation, is investigating ecological thresholds, or *ocean tipping points*, in coastal and ocean systems. These tipping points are small changes generated by human use activities or environmental conditions that result in sometimes unforeseen large-scale impacts to marine ecosystems. The purpose of the project is to develop practical tools to help managers predict, avoid, respond to or recover from abrupt ecosystem shifts.

LOOKING AHEAD

- The sanctuary has been undergoing a management plan review to determine its future scope and direction. A draft management plan and environmental impact statement are being developed, taking into consideration extensive comments received from the public and the Sanctuary Advisory Council.
- Located within sanctuary boundaries, West Hawaii was selected as a Habitat Focus Area for the NOAA Habitat Blueprint initiative in the Pacific Islands. The sanctuary will work closely with NOAA and other partners to improve habitat conditions in the area.



- The sanctuary will initiate the 'Au'au Planning Project, a marine spatial planning process which involves communities and jurisdictional authorities in the marine and coastal areas of West Maui. The goal is to find a balance between marine resource protection and sustainable use practices.



Hawaiian Islands Humpback Whale National Marine Sanctuary lies within the shallow, warm waters surrounding the main Hawaiian Islands and is one of the most important humpback whale habitats in the world. Scientists estimate that two-thirds of the entire North Pacific humpback whale population migrates to Hawaiian waters each winter to breed, calve and nurse their young. The continued protection of humpback whales and their habitat is crucial to the long-term recovery of this endangered species. Established November 4, 1992.

NOAA's Office of National Marine Sanctuaries is committed to supporting lives and livelihoods across the nation and in sanctuary communities through socioeconomic research and monitoring to understand the economic and social drivers of sanctuary resources and improve management practices.

NATIONAL MARINE SANCTUARY SYSTEM

Olympic Coast
Cordell Bank
Gulf of the Farallones
Papahānaumokuākea
Hawaiian Islands Humpback Whale
Monterey Bay
Channel Islands
American Samoa (U.S.)



Thunder Bay
Stellwagen Bank
Monitor
Gray's Reef
Florida Keys
Flower Garden Banks

○ National Marine Sanctuary
△ Marine National Monument
Scale varies in this perspective. Adapted from National Geographic Maps.

The Office of National Marine Sanctuaries serves as the trustee for a system of 14 marine protected areas encompassing more than 150,000 square miles of marine and Great Lakes waters from Washington state to the Florida Keys, and from Lake Huron to American Samoa. The system includes 13 national marine sanctuaries and the Papahānaumokuākea Marine National Monument. For more information on the National Marine Sanctuary System, visit: <http://sanctuaries.noaa.gov>

<http://hawaiihumpbackwhale.noaa.gov/>