

## A Look Ahead

In late 2010, Channel Islands National Marine Sanctuary's new 7,500-square-foot headquarters at the University of California at Santa Barbara (UCSB) was completed, and most of the sanctuary staff has moved onto campus. We will maintain our southern office in Ventura County and our marine operations in Santa Barbara Harbor. The outreach half of the new building, known as the Outreach Center for Teaching Ocean Science (OCTOS), will be connected to the new headquarters and will also measure about 7,500 square feet. OCTOS' external "shell" was completed in 2010, followed by the installation of state-of-the-art exhibits, including an immersion theater, over time. The building, designed by San Francisco-based EHDD Architecture, will meet LEED Gold Certification standards. By moving onto the UCSB campus, we will strengthen our research and education partnership with the university through collaboration with faculty and students from many departments, including the Marine Science Institute and the Bren School for the Environment.

## Jobs, Communities and Culture

The unique location of the Channel Islands National Marine Sanctuary combines dramatic mountainous islands with ocean habitats ranging from deepwater benthic, to kelp forests, to near shore tidal zones and a close proximity to the high population metropolitan area of Southern California. These factors add up to a very popular tourism destination and high value commercial fishery. Recreational activities include boating, sailing, sport fishing, scuba diving, spearfishing, surfing, kayaking and wildlife watching. In 1999, eight whale watch operations accounted for almost 26,000 person-days of activity and about \$1.5 million in revenue. In 1999, eight for-hire operators provided over 4,000 person-days of sailing in the Sanctuary, and four businesses provided over 1,200 person-days of kayaking/land sightseeing in the Sanctuary. These operators received about \$390,000 in revenue from this activity, which in turn generated over \$797,000 in income. In 1999, seven charter operators accounted for almost 11,000 person-days of non-consumptive diving in the Sanctuary and earned approximately \$685,000 in revenue. The average value of marine species caught by commercial fishermen in the sanctuary between 1996 and 2003 was \$24 million.

NOAA's Office of National Marine Sanctuaries is committed to supporting lives and livelihoods across the nation and in sanctuary communities through socioeconomic research and monitoring to understand the economic and social drivers of sanctuary resources and improve management practices.

## Channel Islands National Marine Sanctuary Advisory Council Members

### Officers

Chair: Eric Kett  
 Alternate: Marilyn Kelly  
 Vice Chair: Bruce Steele  
 Secretary: Phyllis Griffman  
 Alternate: Victor Cox

### Non-Governmental Members

Recreational Fishing: David Bacon  
 Alternate: Merit McCrea  
 Recreation Non-Consumptive: Debra Herring  
 Alternate: Perry Ferguson  
 Tourism: Andrea Mills  
 Alternate: Capt. Mat Curto  
 Conservation: Linda Krop  
 Alternate: Greg Helms  
 Business: Capt. Richard McKenna  
 Alternate: Michael W. Gould  
 Education: Maria Petueli  
 Alternate: Amanda Hendrickson  
 Chumash Community: Paulette Luhui Isha Ward  
 Alternate: Vennise Miller-Forte  
 Research: Dr. Robert Warner  
 Alternate: Dr. Mark Steele

### Federal Government

Bureau of Ocean Energy Management, Regulation and Enforcement: Donna Schroeder  
 Alternate: Dr. Ann Bull  
 NOAA Monterey Bay NMS (non-voting): Paul Michel  
 Alternate: Karen Grimmer

Channel Islands National Park (Dept. of Interior):  
 Russell Galipeau  
 Alternate: David Ashe

U.S. Coast Guard: CDR Jason Collins  
 Alternate: LT Steve Arnwine

NOAA National Marine Fisheries Service:  
 LCDR Peter Fischel  
 Alternate: Elizabeth Petras

Department of Defense: John Ugoretz  
 Alternate: Walter Schobel

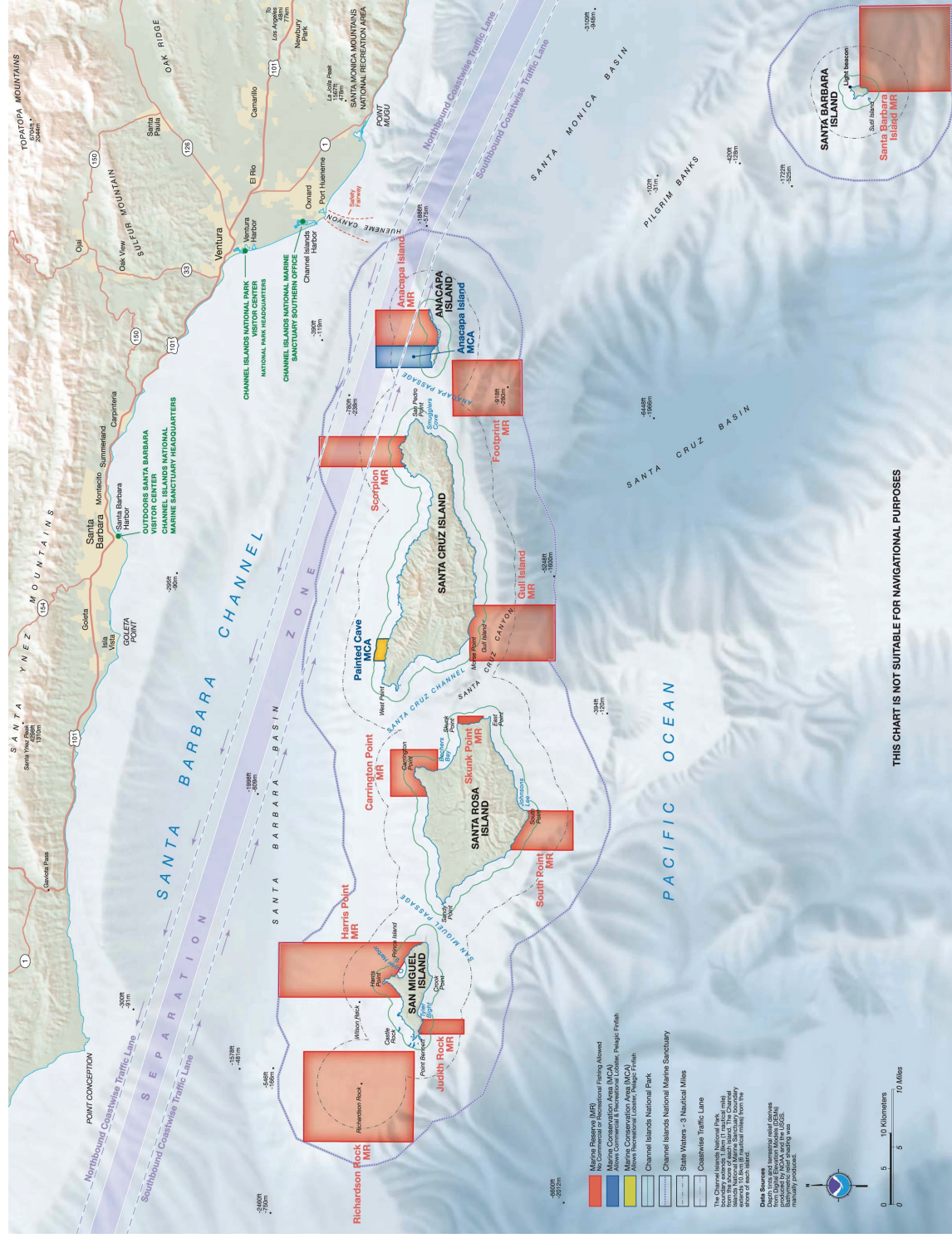
U.S. Department of Defense: John Ugoretz  
 Alternate: Walter Schobel

NOAA Gulf of the Farallones NMS (non-voting):  
 Maria Brown  
 Alternate: Brian Johnson

NOAA Channel Islands NMS (non-voting): Chris Mobley

Sanctuary Advisory Council Coordinator  
 Michael Murray

## 2010 ACCOMPLISHMENTS

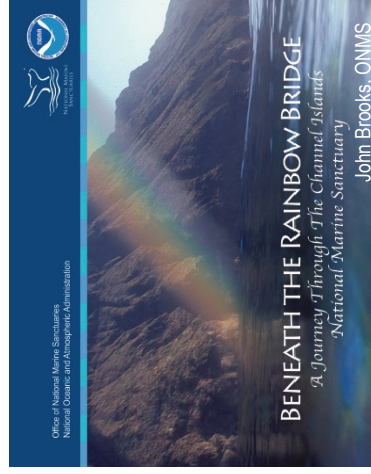


**Channel Islands National Marine Sanctuary** encompasses the waters surrounding San Miguel, Santa Rosa, Santa Cruz, Anacapa and Santa Barbara Islands off the coast of California. The combination of warm and cold water currents around the Channel Islands results in a great variety of plants and animals, including large forests of giant kelp, flourishing populations of fish and invertebrates, and abundant and diverse populations of whales, dolphins, sea lions, harbor seals and seabirds. Established Sept. 22, 1980.



## MERITO Academy Receives Special Recognition from Amgen

The Amgen Foundation featured the Channel Islands National Marine Sanctuary Multicultural Education for Resource Issues Threatening Oceans (MERITO) Academy program in their June 2010 International Charitable Contributions Report among the 36 science education programs sponsored by Amgen within the U.S. and Europe in 2009-2010. Thanks to Amgen sponsorship, combined with NOAA B-WET grants and Santa Barbara Channel Swimming Association contributions, the MERITO Academy served 900 4th - 8th grade largely under-served minority students by providing ocean science content and training to their 26 Title 1 school teachers using in-class presentations, bilingual instruction, and sponsorship of the field trips to coastal sites and the Channel Islands. The 2009 Amgen Foundation Charitable Contributions Report is available at [http://www.amgen.com/citizenship/amgen\\_annual\\_foundation\\_report\\_2009/index.html](http://www.amgen.com/citizenship/amgen_annual_foundation_report_2009/index.html).



## “Beneath the Rainbow Bridge” Film Honors Sanctuary’s 30<sup>th</sup>

In September, 2010, Channel Islands National Marine Sanctuary celebrated its 30<sup>th</sup> anniversary with a film premier of “Beneath the Rainbow Bridge,” a sanctuary film produced in collaboration with the sanctuary. The film’s debut was a huge hit with more than 235 attendees. Both children and adults paid rapt attention throughout the film, asked many questions, and requested copies of the film that they pledged to show in their schools, on local cable TV channels, and in other venues. Members of the Chumash community who were present also said that they enjoyed the film and were pleased by its depiction of their indigenous culture and values. The film premiere was part of the From Shore to Sea lecture series, a monthly public lecture hosted in partnership by the sanctuary, Channel Islands National Park, and the Santa Barbara Maritime Museum.



## Groundbreaking for New Ocean Science Education Building

On January 11, 2010, NOAA Administrator Dr. Jane Lubchenco and Congresswoman Lois Capps joined University of California Santa Barbara (UCSB) officials in a groundbreaking ceremony for the new Ocean Science Education Building on the campus of UCSB. One hundred and fifty guests attended the event, including the sanctuaries Executive Leadership, local environmental leaders, Santa Barbara school board representatives, agency officials and members of the Sanctuary Advisory Council. The Ocean Science Education Building will house the headquarters offices of the sanctuary and a new state-of-the-art Outreach Center for Teaching Ocean Science (OCTOS). The 15,000 square foot facility is a collaboration between UCSB Marine Science Institute and NOAA’s Channel Islands National Marine Sanctuary. As Dr. Lubchenco stated, “the NOAA/UCSB Ocean Science Education Building represents the synergies of education, life-long learning, science, policy, and resource management all coming together around the simple ideal that Healthy Oceans Matter”.

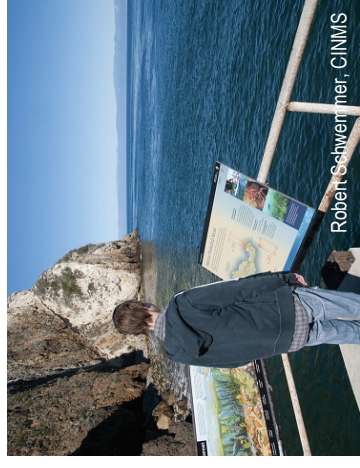


## Cabrillo High School Aquarium Unveils Sanctuaries Kiosk Exhibit

The Cabrillo High School Aquarium in Lompoc, Calif., celebrated Earth Day on April 22, 2010, with an open house and unveiling of a new NOAA Office of National Marine Sanctuaries kiosk exhibit and “Cold Water Kelp Forest” mural by local artist Colleen Gnos. The kelp forest mural and kiosk are used as teaching tools in various aquarium educational programs, including how weather affects ocean conditions, the delicate balance of life within the kelp forest, and the need to protect our ocean life. The mural is more than 17 feet high and provides a realistic view of an intact kelp forest community off San Miguel Island. The kiosk exhibit also features a Beaufort scale and sea surface temperature composite image of Channel Islands National Marine Sanctuary to highlight how weather patterns affect ocean conditions and local marine life.

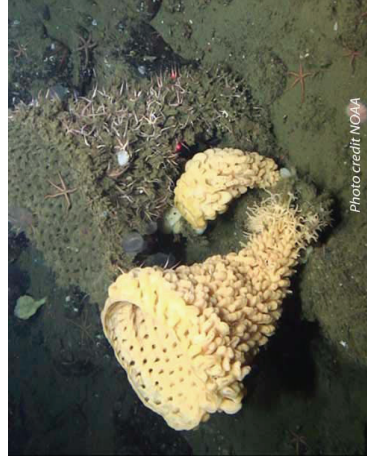
## Signs in at Key Channel Island Locations and Visitor Centers.

Fifteen interpretive signs developed by Channel Islands National Marine Sanctuary and designed by Leslie Stone and Associates were installed at a variety of strategic locations. The signs, which incorporate maps, regulations and information about the Channel Islands Marine Protected Area network, were developed during a multi-year effort as part of the National Marine Sanctuary System’s California Signage Plan. Four of the signs are Channel Islands Marine Protected Area network regulatory signs placed at boat launch ramps in three local harbors. Five of the signs focus on species of interest, habitats, and recreational activities within individual island marine protected areas and are located at island landings on Santa Barbara, Anacapa, Santa Cruz (2 signs) and Santa Rosa islands. Seven signs that focus on resources and activities in the sanctuary will be installed at visitor centers.



## NOAA West Coast Deep Sea Coral Cruise Concludes at Sanctuary

From June 27<sup>th</sup> to July 2<sup>nd</sup> 2010, the NOAA research vessel *McArthur II* conducted deep water surveys in and adjacent to the Channel Islands National Marine Sanctuary. The main goals of the cruise were to survey and characterize the distribution, abundance, and condition of deep-sea coral and sponge communities, to quantify fish and invertebrate associations with deep-sea corals, and to document environmental conditions of deep-sea coral habitats. There were at least 22 taxa of corals observed, and numerous sponges in a variety of shapes, sizes, and colors. Other observations included methane cold seeps and a surprisingly small amount of marine debris. Study results will provide a baseline for future monitoring of changes to the deep sea coral community on the geologic feature Piggy Bank and evaluation of the effectiveness of marine protected areas to conserve biodiversity of habitats and associated communities.



## Sanctuary Hosts “Understanding Ocean Acidification” Workshops

In October 2010, the Sanctuary Education Team, a working group of the Sanctuary Advisory Council, and sanctuary staff hosted two “Understanding Ocean Acidification” workshops for 115 volunteers who interact with the public on whale watch boats, at outreach events or in aquariums. The workshops provided volunteers with scientific background and current research on ocean acidification, case studies about successful aquarium education and outreach efforts, hands-on interactive activities demonstrating physical properties of ocean acidification, access to new outreach kits prepared for the workshops and, an opportunity to interact with people and organizations that are reducing energy use and developing environmentally sustainable practices. Partners supporting the workshops included COSEE (Centers for Ocean Sciences Education Excellence)-West, University of California Santa Barbara Marine Science Institute, Santa Barbara Museum of Natural History’s Ty Warner Sea Center, Channel Islands National Park, and Long Beach Aquarium of the Pacific. Citrix Online developed a workshop website at <http://cisantarctuary.org/acidoocean>



## Advances in Cooperative Enforcement at Channel Islands NMS

In August 2010, Channel Islands National Marine Sanctuary staff co-hosted an enforcement training session with NOAA’s Office of Law Enforcement, General Counsel for Enforcement and Litigation, and the U.S. Coast Guard. The training, provided to crew from the U.S. Coast Guard Patrol Vessel *Blackfin* and rangers with the Channel Islands National Park, focused on fisheries enforcement, several protected resources laws, sanctuary regulations, case reporting, and summary settlements. Also in 2010, sanctuary staff produced the “Channel Islands National Marine Sanctuary and National Park Vessel Patrol Guide” to enhance cooperative enforcement efforts within sanctuary and park waters. The new guides were printed on waterproof and tear proof paper and were distributed to every U.S. Coast Guard, Channel Islands National Park and California Department of Fish and Game enforcement vessel operating in the Channel Islands Sanctuary area. The guide is an essential enforcement job aid that promotes increased awareness and consistent enforcement of sanctuary and park regulations. Similar guides are being developed for the other California sanctuary sites.

