



# Screening Level Risk Assessment Package

## *Panam*



ENVIRONMENTAL  
RESEARCH  
CONSULTING

National Oceanic and  
Atmospheric Administration

Office of National Marine Sanctuaries  
Daniel J. Basta, Director  
Lisa Symons  
John Wagner

Office of Response and Restoration  
Dave Westerholm, Director  
Debbie Payton  
Doug Helton



---

# Table of Contents

|   |           |
|---|-----------|
| <b>Project Background .....</b>   | <b>ii</b> |
| <b>Executive Summary .....</b>  | <b>1</b>  |
| <b>Section 1: Vessel Background Information: Remediation of Underwater Legacy</b> |           |
| <b>Environmental Threats (RULET).....</b>   | <b>2</b>  |
| Vessel Particulars.....   | 2         |
| Casualty Information.....   | 3         |
| Wreck Location.....   | 4         |
| Casualty Narrative .....  | 4         |
| General Notes .....   | 4         |
| Wreck Condition/Salvage History .....   | 5         |
| Archaeological Assessment .....   | 5         |
| Assessment.....   | 5         |
| Background Information References .....   | 6         |
| Vessel Risk Factors.....  | 6         |
| <b>Section 2: Environmental Impact Modeling.....</b>                              | <b>13</b> |
| Release Scenarios Used in the Modeling .....                                      | 13        |
| Oil Type for Release .....  | 15        |
| Oil Thickness Thresholds.....   | 15        |
| Potential Impacts to the Water Column.....  | 16        |
| Potential Water Surface Slick.....  | 17        |
| Potential Shoreline Impacts.....  | 19        |
| <b>Section 3: Ecological Resources At Risk .....</b>                              | <b>20</b> |
| Ecological Risk Factors .....   | 22        |
| <b>Section 4: Socio-Economic Resources At Risk .....</b>                          | <b>27</b> |
| Socio-Economic Risk Factors .....   | 30        |
| <b>Section 5: Overall Risk Assessment and Recommendations for Assessment,</b>     |           |
| <b>Monitoring or Remediation .....</b>  | <b>35</b> |

---

## Project Background

The past century of commerce and warfare has left a legacy of thousands of sunken vessels along the U.S. coast. Many of these wrecks pose environmental threats because of the hazardous nature of their cargoes, presence of munitions, or bunker fuel oils left onboard. As these wrecks corrode and decay, they may release oil or hazardous materials. Although a few vessels, such as USS *Arizona* in Hawaii, are well-publicized environmental threats, most wrecks, unless they pose an immediate pollution threat or impede navigation, are left alone and are largely forgotten until they begin to leak.

In order to narrow down the potential sites for inclusion into regional and area contingency plans, in 2010, Congress appropriated \$1 million to identify the most ecologically and economically significant potentially polluting wrecks in U.S. waters. This project supports the U.S. Coast Guard and the Regional Response Teams as well as NOAA in prioritizing threats to coastal resources while at the same time assessing the historical and cultural significance of these nonrenewable cultural resources.

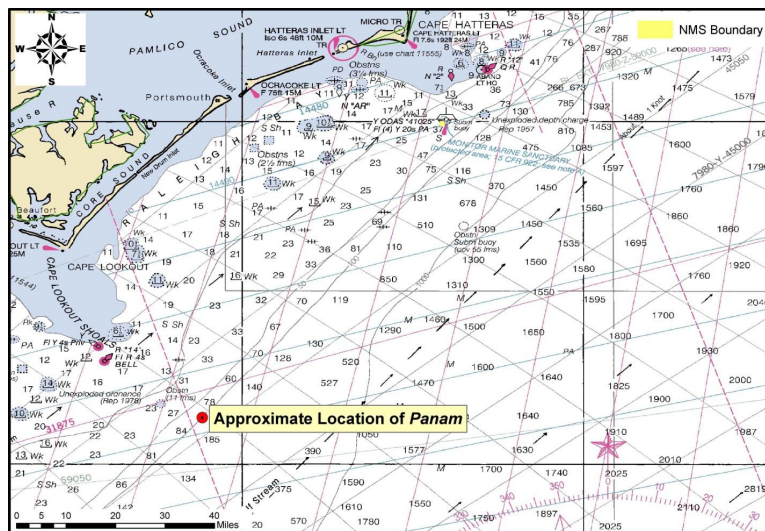
The potential polluting shipwrecks were identified through searching a broad variety of historical sources. NOAA then worked with Research Planning, Inc., RPS ASA, and Environmental Research Consulting to conduct the modeling forecasts, and the ecological and environmental resources at risk assessments.

Initial evaluations of shipwrecks located within American waters found that approximately 600-1,000 wrecks could pose a substantial pollution threat based on their age, type and size. This includes vessels sunk after 1891 (when vessels began being converted to use oil as fuel), vessels built of steel or other durable material (wooden vessels have likely deteriorated), cargo vessels over 1,000 gross tons (smaller vessels would have limited cargo or bunker capacity), and any tank vessel.

Additional ongoing research has revealed that 87 wrecks pose a potential pollution threat due to the violent nature in which some ships sank and the structural reduction and demolition of those that were navigational hazards. To further screen and prioritize these vessels, risk factors and scores have been applied to elements such as the amount of oil that could be on board and the potential ecological or environmental impact.

## Executive Summary: *Panam*

The tanker *Panam*, torpedoed and sunk during World War II off the coast of North Carolina in 1943, was identified as a potential pollution threat, thus a screening-level risk assessment was conducted. The different sections of this document summarize what is known about the *Panam*, the results of environmental impact modeling composed of different release scenarios, the ecological and socio-economic resources that would be at risk in the event of releases, the screening-level risk scoring results and overall risk assessment, and recommendations for assessment, monitoring, or remediation.



Based on this screening-level assessment, each vessel was assigned a summary score calculated using the seven risk criteria described in this report. For the Worst Case Discharge, *Panam* scores Medium with 12 points; for the Most Probable Discharge (10% of the Worst Case volume), *Panam* scores Low with 9 points. Given these scores, NOAA would typically recommend that this site be considered for an assessment to determine the vessel condition, amount of oil onboard, and feasibility of oil removal action. However, given the low level of data certainty and that the location of this vessel is unknown, NOAA recommends that surveys of opportunity be used to attempt to locate this vessel and that general notations are made in Area Contingency Plans so that if a mystery spill is reported in the general area, this vessel could be investigated as a source. Outreach efforts with the technical and recreational dive community as well as commercial and recreational fishermen who frequent the area would be helpful to gain awareness of localized spills in the general area where the vessel is believed lost.

| Vessel Risk Factors         |                                   | Risk Score |          |
|-----------------------------|-----------------------------------|------------|----------|
| Pollution Potential Factors | A1: Oil Volume (total bbl)        | Med        |          |
|                             | A2: Oil Type                      |            |          |
|                             | B: Wreck Clearance                |            |          |
|                             | C1: Burning of the Ship           |            |          |
|                             | C2: Oil on Water                  |            |          |
|                             | D1: Nature of Casualty            |            |          |
|                             | D2: Structural Breakup            |            |          |
| Archaeological Assessment   | Archaeological Assessment         | Not Scored |          |
| Operational Factors         | Wreck Orientation                 | Not Scored |          |
|                             | Depth                             |            |          |
|                             | Confirmation of Site Condition    |            |          |
|                             | Other Hazardous Materials         |            |          |
|                             | Munitions Onboard                 |            |          |
|                             | Gravesite (Civilian/Military)     |            |          |
|                             | Historical Protection Eligibility |            |          |
|                             |                                   | WCD        | MP (10%) |
| Ecological Resources        | 3A: Water Column Resources        | Med        | Low      |
|                             | 3B: Water Surface Resources       | Med        | Low      |
|                             | 3C: Shore Resources               | Low        | Low      |
| Socio-Economic Resources    | 4A: Water Column Resources        | Low        | Low      |
|                             | 4B: Water Surface Resources       | High       | Med      |
|                             | 4C: Shore Resources               | Low        | Low      |
| Summary Risk Scores         |                                   | 12         | 9        |

The determination of each risk factor is explained in the document. This summary table is found on page 36.

## SECTION 1: VESSEL BACKGROUND INFORMATION: REMEDIATION OF UNDERWATER LEGACY ENVIRONMENTAL THREATS (RULET)

### Vessel Particulars

**Official Name:** *Panam*

**Official Number:** Unknown

**Vessel Type:** Tanker

**Vessel Class:** Unknown

**Former Names:** *Otokia*

**Year Built:** 1925

**Builder:** Livingstne & Cooper, Ld. Hesse

**Builder's Hull Number:** Unknown

**Flag:** Panamanian

**Owner at Loss:** United States War Shipping Administration

**Controlled by:** United States War Shipping Administration

**Chartered to:** Marine Transport Lines, Inc.

**Operated by:** Unknown

**Homeport:** *Panama City, Panama*

**Length:** 438 feet

**Beam:** 57 feet

**Depth:** 33 feet

**Gross Tonnage:** 7,277

**Net Tonnage:** 4,330

**Hull Material:** Steel

**Hull Fastenings:** Riveted

**Powered by:** Oil engines

**Bunker Type:** Marine diesel

**Bunker Capacity (bbl):** 6,734

**Average Bunker Consumption (bbl) per 24 hours:** 104

**Liquid Cargo Capacity (bbl):** 79,540

**Dry Cargo Capacity:** Unknown

**Tank or Hold Description:** Vessel had 10 tanks and 5 summer tanks

## Casualty Information

**Port Departed:** Norfolk, VA

**Destination Port:** Lake Charles, LA

**Date Departed:** May 1, 1943

**Date Lost:** May 4, 1943

**Number of Days Sailing:**  $\approx 4$

**Cause of Sinking:** Act of War (Torpedoes)

**Latitude (DD):** 34.13517

**Longitude (DD):** -76.11629

**Nautical Miles to Shore:** 37

**Nautical Miles to NMS:** 66

**Nautical Miles to MPA:** 0

**Nautical Miles to Fisheries:** Unknown

**Approximate Water Depth (Ft):** 600

**Bottom Type:** Sand

**Is There a Wreck at This Location?** Unknown, wreck has never been located or surveyed

**Wreck Orientation:** Unknown

**Vessel Armament:** One 5-in gun and two .50cal machine guns

**Cargo Carried when Lost:** Water Ballast

**Cargo Oil Carried (bbl):** 0

**Cargo Oil Type:** N/A

**Probable Fuel Oil Remaining (bbl):**  $\leq 6,734$

**Fuel Type:** Marine diesel

**Total Oil Carried (bbl):**  $\leq 6,734$

**Dangerous Cargo or Munitions:** Yes

**Munitions Carried:** Munitions for onboard weapons

**Demolished after Sinking:** No

**Salvaged:** No

**Cargo Lost:** N/A

**Reportedly Leaking:** No

**Historically Significant:** Yes

**Gravesite:** Yes

**Salvage Owner:** Not known if any



## Wreck Location

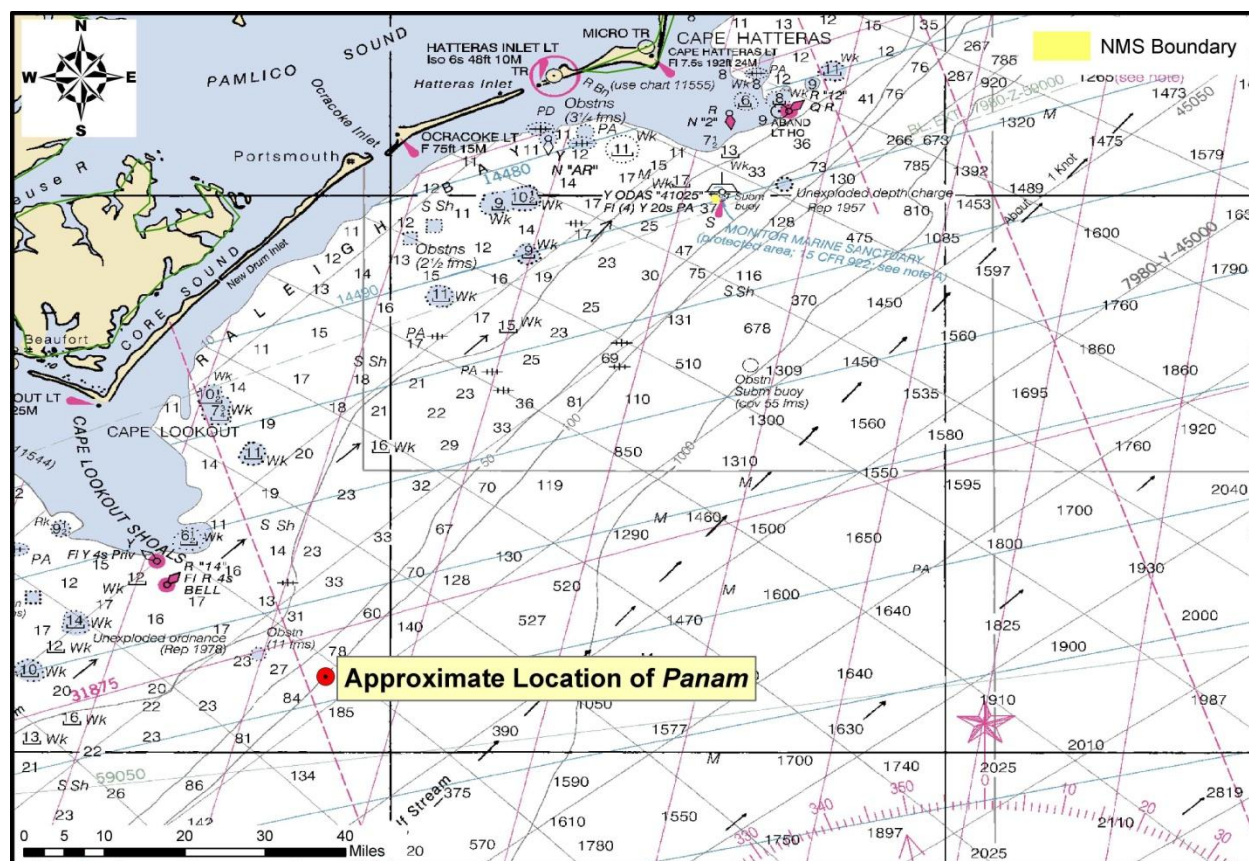


Chart Number: 11009

## Casualty Narrative

"At 14.18 hours on 4 May, 1943, the *Panam* (Master Jorgen Knudsen) was hit by one torpedo from *U-129* off the coast of North Carolina. The ship had become a straggler from convoy NK-538 since 07.00 hours the same day due to engine troubles. The torpedo hit on the port side in the engine room, completely wrecking it and killing two crew members on watch below. Six minutes later a second torpedo struck on the port side amidships, wrecking the pumproom and caused the ship to sink at 14.55 hours. The remaining 35 crew members and 14 armed guards abandoned ship in three lifeboats and were picked up by *USS SC-664* about 20.00 hours and landed four hours later at Morehead City, North Carolina."

[-http://www.uboot.net/allies/merchants/ships/2911.html](http://www.uboot.net/allies/merchants/ships/2911.html)

## General Notes

AWOIS Data:

NM36/45(4193)--65 FM LD; CHARTED AS NON-DANGEROUS SUNKEN WK. AT POS.  
34-08-06N, 76-07W.

### DESCRIPTION

NO.643; TANKER, 7277 GT; SUNK 5/4/43 BY SUBMARINE; POSITION ACCURACY 1-3 MILES; LOCATED 1944 (SOURCE UNK).  
SURVEY REQUIREMENTS NOT DETERMINED.



TKR; TORPEDOED MAY 4, 1943; 7277 TONS.

"Completed in September 1925 as British Otokia for Union SS Co of New Zealand Ltd, London. 1937 sold to Panama and renamed *Panam* for Cia Maritima Istmenia Ltda, Panama. On 14 Jul, 1942, seized at New York by the U.S. War Shipping Administration (WSA) and assigned to the Marine Transport Lines Inc, New York."

[-http://www.uboa.net/allies/merchants/ships/2911.html](http://www.uboa.net/allies/merchants/ships/2911.html)

## Wreck Condition/Salvage History

Unknown; vessel has not been discovered. Although, the 1943 *Gentian* survey identified a wreck in 480 feet of water that might be *Panam*.

## Archaeological Assessment

The archaeological assessment provides additional primary source based documentation about the sinking of vessels. It also provides condition-based archaeological assessment of the wrecks when possible. It does not provide a risk-based score or definitively assess the pollution risk or lack thereof from these vessels, but includes additional information that could not be condensed into database form.

Where the current condition of a shipwreck is not known, data from other archaeological studies of similar types of shipwrecks provide the means for brief explanations of what the shipwreck might look like and specifically, whether it is thought there is sufficient structural integrity to retain oil. This is more subjective than the Pollution Potential Tree and computer-generated resource at risk models, and as such provides an additional viewpoint to examine risk assessments and assess the threat posed by these shipwrecks. It also addresses questions of historical significance and the relevant historic preservation laws and regulations that will govern on-site assessments.

In some cases where little additional historic information has been uncovered about the loss of a vessel, archaeological assessments cannot be made with any degree of certainty and were not prepared. For vessels with full archaeological assessments, NOAA archaeologists and contracted archivists have taken photographs of primary source documents from the National Archives that can be made available for future research or on-site activities.

## Assessment

The wreck of Panamanian tanker *Panam* has not been definitively located, so there are no detailed site reports that would allow NOAA archaeologists to provide a condition based archaeological assessment of the shipwreck. Some additional analysis can be made based on the historic sinking reports of the ship that may be of value to the U.S. Coast Guard. We know from archival research that the ship was struck by two torpedoes. The first torpedo stuck in the engine room "completely wrecking it. The explosion also caused an immediate flooding; main engines were destroyed; radio became inoperative. About 8-10 minutes later a second torpedo struck on the port side amidships. Explosion wrecked pump room and buckled deck plates."

Based on the location of the torpedo damage from the first torpedo and the report of the engine room and engines being completely destroyed, much of the ship's diesel fuel was likely released as a result of the

attack. Because the shipwreck has not definitively been located, it is not possible to determine with any degree of accuracy what the current condition of the wreck is and how likely the vessel is to contain oil. The only way to conclusively determine the condition of the shipwreck will be to examine the site after it is discovered.

Should the vessel be located in a survey of opportunity or due to a mystery spill attributed to this vessel, it should be noted that this vessel is of historic significance and will require appropriate actions be taken under the National Historic Preservation Act (NHPA) and the Sunken Military Craft Act (SMCA) prior to any actions that could impact the integrity of the vessel. This vessel may be eligible for listing on the National Register of Historic Places. The site is also considered a war grave and appropriate actions should be undertaken to minimize disturbance to the site.

## Background Information References

**Vessel Image Sources:** No image of this vessel has been located by NOAA

**Construction Diagrams or Plans in RULET Database?** No

### Text References:

-Office of the Chief of Naval Operations

Tenth Fleet ASW Analysis & Stat. Section Series XIII. Report and Analyses of U. S. and Allied Merchant Shipping Losses 1941-1945 Otis Skinner – Pecos, Records of the Office of the Chief of Naval Operations, Box 241, Record Group 38, National Archives at College Park, MD.

-AWOIS database

<http://www.uboaat.net/allies/merchants/ships/2911.html>

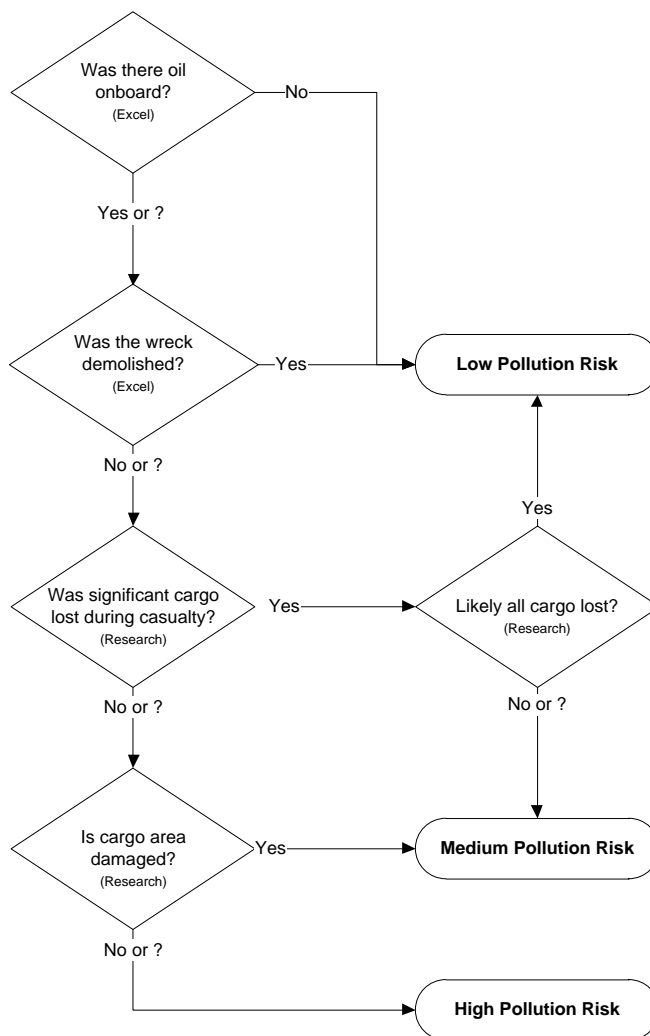
## Vessel Risk Factors

In this section, the risk factors that are associated with the vessel are defined and then applied to the *Panam* based on the information available. These factors are reflected in the pollution potential risk assessment development by the U.S. Coast Guard Salvage Engineering Response Team (SERT) as a means to apply a salvage engineer's perspective to the historical information gathered by NOAA. This analysis reflected in Figure 1-1 is simple and straightforward and, in combination with the accompanying archaeological assessment, provides a picture of the wreck that is as complete as possible based on current knowledge and best professional judgment. This assessment does not take into consideration operational constraints such as depth or unknown location, but rather attempts to provide a replicable and objective screening of the historical date for each vessel. SERT reviewed the general historical information available for the database as a whole and provided a stepwise analysis for an initial indication of Low/Medium/High values for each vessel.

In some instances, nuances from the archaeological assessment may provide additional input that will amend the score for Section 1. Where available, additional information that may have bearing on operational considerations for any assessment or remediation activities is provided.

Each risk factor is characterized as High, Medium, or Low Risk or a category-appropriate equivalent such as No, Unknown, Yes, or Yes Partially. The risk categories correlate to the decision points reflected in Figure 1-1.

### Pollution Potential Tree



**Figure 1-1:** U.S. Coast Guard Salvage Engineering Response Team (SERT) developed the above Pollution Potential Decision Tree.

Each of the risk factors also has a “data quality modifier” that reflects the completeness and reliability of the information on which the risk ranks were assigned. The quality of the information is evaluated with respect to the factors required for a reasonable preliminary risk assessment. The data quality modifier scale is:

- **High Data Quality:** All or most pertinent information on wreck available to allow for thorough risk assessment and evaluation. The data quality is high and confirmed.
- **Medium Data Quality:** Much information on wreck available, but some key factor data are missing or the data quality is questionable or not verified. Some additional research needed.

- **Low Data Quality:** Significant issues exist with missing data on wreck that precludes making preliminary risk assessment, and/or the data quality is suspect. Significant additional research needed.

In the following sections, the definition of low, medium, and high for each risk factor is provided. Also, the classification for the *Panam* is provided, both as text and as shading of the applicable degree of risk bullet.

## **Pollution Potential Factors**

### **Risk Factor A1: Total Oil Volume**

The oil volume classifications correspond to the U.S. Coast Guard spill classifications:

- **Low Volume: Minor Spill** <240 bbl (10,000 gallons)
- **Medium Volume: Medium Spill** ≥240 – 2,400 bbl (100,000 gallons)
- **High Volume: Major Spill** ≥2,400 bbl (≥100,000 gallons)

The oil volume risk classifications refer to the volume of the most-likely Worst Case Discharge from the vessel and are based on the amount of oil believed or confirmed to be on the vessel.

The *Panam* is ranked as High Volume because it is thought to have a potential for up to 6,734 bbl (assuming full bunkers), although some of that may have been lost at the time of the casualty. Data quality is medium.

The risk factor for volume also incorporates any reports or anecdotal evidence of actual leakage from the vessel or reports from divers of oil in the overheads, as opposed to potential leakage. This reflects the history of the vessel's leakage. There are no reports of leakage from the *Panam*.

### **Risk Factor A2: Oil Type**

The oil type(s) on board the wreck are classified only with regard to persistence, using the U.S. Coast Guard oil grouping<sup>1</sup>. (Toxicity is dealt with in the impact risk for the Resources at Risk classifications.)

The three oil classifications are:

- **Low Risk: Group I Oils** – non-persistent oil (e.g., gasoline)
- **Medium Risk: Group II – III Oils** – medium persistent oil (e.g., diesel, No. 2 fuel, light crude, medium crude)
- **High Risk: Group IV** – high persistent oil (e.g., heavy crude oil, No. 6 fuel oil, Bunker C)

The *Panam* is classified as Medium Risk because the bunker oil is diesel oil, a Group II oil type. Data quality is high.

<sup>1</sup> Group I Oil or Nonpersistent oil is defined as "a petroleum-based oil that, at the time of shipment, consists of hydrocarbon fractions: At least 50% of which, by volume, distill at a temperature of 340°C (645°F); and at least 95% of which, by volume, distill at a temperature of 370°C (700°F)."

Group II - Specific gravity less than 0.85 crude [API° >35.0]

Group III - Specific gravity between 0.85 and less than .95 [API° ≤35.0 and >17.5]

Group IV - Specific gravity between 0.95 to and including 1.0 [API° ≤17.5 and >10.0]

### ***Was the wreck demolished?***

#### **Risk Factor B: Wreck Clearance**

This risk factor addresses whether or not the vessel was historically reported to have been demolished as a hazard to navigation or by other means such as depth charges or aerial bombs. This risk factor is based on historic records and does not take into account what a wreck site currently looks like. The risk categories are defined as:

- **Low Risk:** The site was reported to have been entirely destroyed after the casualty
- **Medium Risk:** The wreck was reported to have been partially cleared or demolished after the casualty
- **High Risk:** The wreck was not reported to have been cleared or demolished after the casualty
- **Unknown:** It is not known whether or not the wreck was cleared or demolished at the time of or after the casualty

The *Panam* is classified as High Risk because there are no known historic accounts of the wreck being demolished as a hazard to navigation. Data quality is high.

### ***Was significant cargo or bunker lost during casualty?***

#### **Risk Factor C1: Burning of the Ship**

This risk factor addresses any burning that is known to have occurred at the time of the vessel casualty and may have resulted in oil products being consumed or breaks in the hull or tanks that would have increased the potential for oil to escape from the shipwreck. The risk categories are:

- **Low Risk:** Burned for multiple days
- **Medium Risk:** Burned for several hours
- **High Risk:** No burning reported at the time of the vessel casualty
- **Unknown:** It is not known whether or not the vessel burned at the time of the casualty

The *Panam* is classified as High Risk because there are no known reports of oil at the time of the casualty. Data quality is high.

#### **Risk Factor C2: Reported Oil on the Water**

This risk factor addresses reports of oil on the water at the time of the vessel casualty. The amount is relative and based on the number of available reports of the casualty. Seldom are the reports from trained observers so this is very subjective information. The risk categories are defined as:

- **Low Risk:** Large amounts of oil reported on the water by multiple sources
- **Medium Risk:** Moderate to little oil reported on the water during or after the sinking event
- **High Risk:** No oil reported on the water
- **Unknown:** It is not known whether or not there was oil on the water at the time of the casualty

The *Panam* is classified as High Risk because there are no known reports of oil spreading across the water as the vessel went down. Data quality is high.

### ***Is the cargo area damaged?***

#### **Risk Factor D1: Nature of the Casualty**

This risk factor addresses the means by which the vessel sank. The risk associated with each type of casualty is determined by the how violent the sinking event was and the factors that would contribute to increased initial damage or destruction of the vessel (which would lower the risk of oil, other cargo, or munitions remaining on board). The risk categories are:

- **Low Risk:** Multiple torpedo detonations, multiple mines, severe explosion
- **Medium Risk:** Single torpedo, shellfire, single mine, rupture of hull, breaking in half, grounding on rocky shoreline
- **High Risk:** Foul weather, grounding on soft bottom, collision
- **Unknown:** The cause of the loss of the vessel is not known

The *Panam* is classified as Low Risk because there were two torpedo detonations. Data quality is high.

#### **Risk Factor D2: Structural Breakup**

This risk factor takes into account how many pieces the vessel broke into during the sinking event or since sinking. This factor addresses how likely it is that multiple components of a ship were broken apart including tanks, valves, and pipes. Experience has shown that even vessels broken in three large sections can still have significant pollutants on board if the sections still have some structural integrity. The risk categories are:

- **Low Risk:** The vessel is broken into more than three pieces
- **Medium Risk:** The vessel is broken into two-three pieces
- **High Risk:** The vessel is not broken and remains as one contiguous piece
- **Unknown:** It is currently not known whether or not the vessel broke apart at the time of loss or after sinking

The *Panam* is classified as Unknown Risk because it is not known whether additional structural breakup occurred after the vessel sank since it has never been positively located. Data quality is low.

### **Factors That May Impact Potential Operations**

#### **Orientation (degrees)**

This factor addresses what may be known about the current orientation of the intact pieces of the wreck (with emphasis on those pieces where tanks are located) on the seafloor. For example, if the vessel turtled, not only may it have avoided demolition as a hazard to navigation, but it has a higher likelihood of retaining an oil cargo in the non-vented and more structurally robust bottom of the hull.

The location of the *Panam* is unknown. Data quality is low.

#### **Depth**

Depth information is provided where known. In many instances, depth will be an approximation based on charted depths at the last known locations.

The *Panam* is believed to be between 470 and 600 feet deep based on the reported sinking location. Data quality is low.

#### **Visual or Remote Sensing Confirmation of Site Condition**

This factor takes into account what the physical status of wreck site as confirmed by remote sensing or other means such as ROV or diver observations and assesses its capability to retain a liquid cargo. This assesses whether or not the vessel was confirmed as entirely demolished as a hazard to navigation, or severely compromised by other means such as depth charges, aerial bombs, or structural collapse.

The location of the *Panam* may have been discovered in 1944 by the U.S. Coast Guard vessel *Gentian*. Data quality is low.

#### **Other Hazardous (Non-Oil) Cargo on Board**

This factor addresses hazardous cargo other than oil that may be on board the vessel and could potentially be released, causing impacts to ecological and socio-economic resources at risk.

There are no reports of hazardous materials onboard. Data quality is high.

#### **Munitions on Board**

This factor addresses hazardous cargo other than oil that may be on board the vessel and could potentially be released or detonated causing impacts to ecological and socio-economic resources at risk.

The *Panam* had munitions for onboard weapons, one 5-inch gun and two .50 caliber machine guns. Data quality is high.

#### **Vessel Pollution Potential Summary**

Table 1-1 summarizes the risk factor scores for the pollution potential and mitigating factors that would reduce the pollution potential for the *Panam*. Operational factors are listed but do not have a risk score.



**Table 1-1:** Summary matrix for the vessel risk factors for the *Panam* color-coded as red (high risk), yellow (medium risk), and green (low risk).

| Vessel Risk Factors         |   | Data Quality Score | Comments  | Risk Score |
|-----------------------------|---|--------------------|---|------------|
| Pollution Potential Factors | A1: Oil Volume (total bbl)                              | Medium             | Maximum of 6,734 bbl, not reported to be leaking  | Med        |
|                             | A2: Oil Type  | High               | Bunker fuel is diesel, a Group II oil type  |            |
|                             | B: Wreck Clearance                                      | High               | Vessel not reported as cleared  |            |
|                             | C1: Burning of the Ship                                 | High               | No fire was reported  |            |
|                             | C2: Oil on Water  | High               | No oil was reported on the water  |            |
|                             | D1: Nature of Casualty                                  | High               | Two torpedo detonations   |            |
|                             | D2: Structural Breakup                                  | Low                | Unknown structural breakup  |            |
| Archaeological Assessment   | Archaeological Assessment                               | Medium             | Detailed sinking records of this ship were located, but no site reports exist, assessment is believed to be moderately accurate | Not Scored |
| Operational Factors         | Wreck Orientation                                       | Low                | Unknown   | Not Scored |
|                             | Depth   | Low                | >450 ft   |            |
|                             | Visual or Remote Sensing Confirmation of Site Condition | Low                | Location unknown  |            |
|                             | Other Hazardous Materials Onboard                       | High               | No  |            |
|                             | Munitions Onboard                                       | High               | Munitions for onboard weapons   |            |
|                             | Gravesite (Civilian/Military)                           | High               | Yes   |            |
|                             | Historical Protection Eligibility (NHPA/SMCA)           | High               | NHPA and possibly SMCA  |            |

## SECTION 2: ENVIRONMENTAL IMPACT MODELING

To help evaluate the potential transport and fates of releases from sunken wrecks, NOAA worked with RPS ASA to run a series of generalized computer model simulations of potential oil releases. The results are used to assess potential impacts to ecological and socio-economic resources, as described in Sections 3 and 4. The modeling results are useful for this screening-level risk assessment; however, it should be noted that detailed site/vessel/and seasonally specific modeling would need to be conducted prior to any intervention on a specific wreck.

### Release Scenarios Used in the Modeling

The potential volume of leakage at any point in time will tend to follow a probability distribution. Most discharges are likely to be relatively small, though there could be multiple such discharges. There is a lower probability of larger discharges, though these scenarios would cause the greatest damage. A **Worst Case Discharge** (WCD) would involve the release of all of the cargo oil and bunkers present on the vessel. In the case of the *Panam* this would be about 7,000 bbl (rounded up from 6,734 bbl) based on current estimates of the maximum amount of oil remaining onboard the wreck.

The likeliest scenario of oil release from most sunken wrecks, including the *Panam*, is a small, episodic release that may be precipitated by disturbance of the vessel in storms. Each of these episodic releases may cause impacts and require a response. **Episodic** releases are modeled using 1% of the WCD. Another scenario is a very low chronic release, i.e., a relatively regular release of small amounts of oil that causes continuous oiling and impacts over the course of a long period of time. This type of release would likely be precipitated by corrosion of piping that allows oil to flow or bubble out at a slow, steady rate. **Chronic** releases are modeled using 0.1% of the WCD.

The **Most Probable** scenario is premised on the release of all the oil from one tank. In the absence of information on the number and condition of the cargo or fuel tanks for all the wrecks being assessed, this scenario is modeled using 10% of the WCD. The **Large** scenario is loss of 50% of the WCD. The five major types of releases are summarized in Table 2-1. The actual type of release that occurs will depend on the condition of the vessel, time factors, and disturbances to the wreck. Note that episodic and chronic release scenarios represent a small release that is repeated many times, potentially repeating the same magnitude and type of impact(s) with each release. The actual impacts would depend on the environmental factors such as real-time and forecast winds and currents during each release and the types/quantities of ecological and socio-economic resources present.

The model results here are based on running the RPS ASA Spill Impact Model Application Package (SIMAP) two hundred times for each of the five spill volumes shown in Table 2-1. The model randomly selects the date of the release, and corresponding environmental, wind, and ocean current information from a long-term wind and current database.

When a spill occurs, the trajectory, fate, and effects of the oil will depend on environmental variables, such as the wind and current directions over the course of the oil release, as well as seasonal effects. The

magnitude and nature of potential impacts to resources will also generally have a strong seasonal component (e.g., timing of bird migrations, turtle nesting periods, fishing seasons, and tourism seasons).

**Table 2-1:** Potential oil release scenario types for the *Panam*.

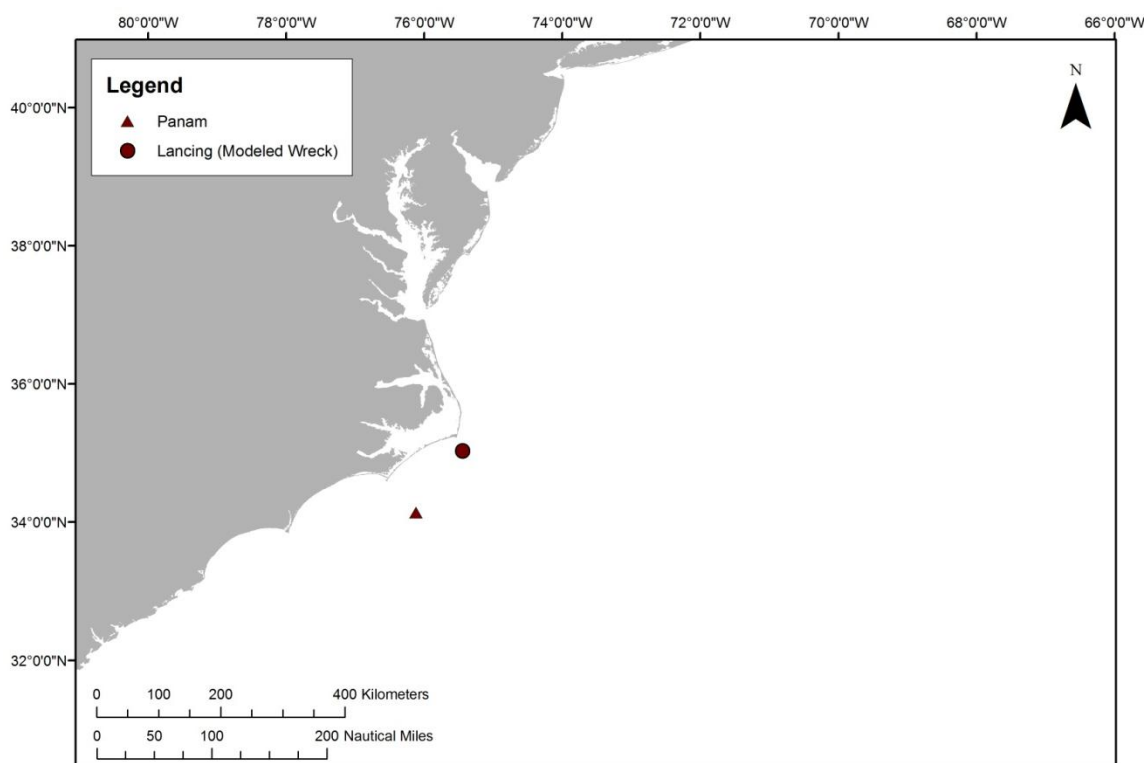
| Scenario Type                        | Release per Episode | Time Period                          | Release Rate               | Relative Likelihood | Response Tier |
|--------------------------------------|---------------------|--------------------------------------|----------------------------|---------------------|---------------|
| <b>Chronic</b><br>(0.1% of WCD)      | 7 bbl               | Fairly regular intervals or constant | 100 bbl over several days  | More likely         | Tier 1        |
| <b>Episodic</b><br>(1% of WCD)       | 70 bbl              | Irregular intervals                  | Over several hours or days | Most Probable       | Tier 1-2      |
| <b>Most Probable</b><br>(10% of WCD) | 700 bbl             | One-time release                     | Over several hours or days | Most Probable       | Tier 2        |
| <b>Large</b><br>(50% of WCD)         | 3,500 bbl           | One-time release                     | Over several hours or days | Less likely         | Tier 2-3      |
| <b>Worst Case</b>                    | 7,000 bbl           | One-time release                     | Over several hours or days | Least likely        | Tier 3        |

The modeling results represent 200 simulations for each spill volume with variations in spill trajectory based on winds and currents. The spectrum of the simulations gives a perspective on the variations in likely impact scenarios. Some resources will be impacted in nearly all cases; some resources may not be impacted unless the spill trajectory happens to go in that direction based on winds and currents at the time of the release and in its aftermath.

For the large and WCD scenarios, the duration of the release was assumed to be 12 hours, envisioning a storm scenario where the wreck is damaged or broken up, and the model simulations were run for a period of 30 days. The releases were assumed to be from a depth between 2-3 meters above the sea floor, using the information known about the wreck location and depth.

As discussed in the NOAA 2013 Risk Assessment for Potentially Polluting Wrecks in U.S. Waters, NOAA identified 87 high and medium priority wrecks for screening-level risk assessment. Within the available funds, it was not feasible to conduct computer model simulations of all 87 high and medium priority wrecks. Therefore, efforts were made to create “clusters” of vessels in reasonable proximity and with similar oil types. In general, the wreck with the largest potential amount of oil onboard was selected for modeling of oil release volumes, and the results were used as surrogates for the other vessels in the cluster. In particular, the regression curves created for the modeled wreck were used to determine the impacts to water column, water surface, and shoreline resources. The *Panam*, with up to 6,734 bbl of diesel onboard, was clustered with the *Lancing*, which was modeled at 77,000 bbl of light fuel oil. Figure 2-1 shows the location of both vessels.

It is important to acknowledge that these scenarios are only for this screening-level assessment. Detailed site/vessel/and seasonally specific modeling would need to be conducted prior to any intervention on a specific wreck.



**Figure 2-1:** Location of the *Panam* (red triangle), the wreck discussed in this package, and the *Lancing* (red circle) which was the wreck that was actually modeled in the computer modeling simulations. The results for the *Lancing* are used to estimate the impacts of releases from the *Panam*, as discussed in the text.

### Oil Type for Release

The *Panam* contained a maximum of 6,734 bbl of diesel as the bunker fuel (a Group II oil). Thus, the spill model for the *Lancing*, which was run using light fuel oil, was used for this assessment of the *Panam*.

### Oil Thickness Thresholds

The model results are reported for different oil thickness thresholds, based on the amount of oil on the water surface or shoreline and the resources potentially at risk. Table 2-2 shows the terminology and thicknesses used in this report, for both oil thickness on water and the shoreline. For oil on the water surface, a thickness of  $0.01 \text{ g/m}^2$ , which would appear as a barely visible sheen, was used as the threshold for socio-economic impacts because often fishing is prohibited in areas with any visible oil, to prevent contamination of fishing gear and catch. A thickness of  $10 \text{ g/m}^2$  was used as the threshold for ecological impacts, primarily due to impacts to birds, because that amount of oil has been observed to be enough to mortally impact birds and other wildlife. In reality, it is very unlikely that oil would be evenly distributed on the water surface. Spilled oil is always distributed patchily on the water surface in bands or tarballs with clean water in between. So, Table 2-2a shows the number of tarballs per acre on the water surface for these oil thickness thresholds, assuming that each tarball was a sphere that was 1 inch in diameter. For oil stranded onshore, a thickness of  $1 \text{ g/m}^2$  was used as the threshold for socio-economic impacts because that amount of oil would conservatively trigger the need for shoreline cleanup on amenity beaches. A thickness of  $100 \text{ g/m}^2$  was used as the threshold for ecological impacts based on a synthesis of

the literature showing that shoreline life has been affected by this degree of oiling.<sup>2</sup> Because oil often strands onshore as tarballs, Table 2-2a shows the number of tarballs per m<sup>2</sup> on the shoreline for these oil thickness thresholds, assuming that each tarball was a sphere that was 1 inch in diameter.

**Table 2-2a:** Oil thickness thresholds used in calculating area of water impacted. Refer to Sections 3 and 4 for explanations of the thresholds for ecological and socio-economic resource impacts.

| Oil Description | Sheen Appearance | Approximate Sheen Thickness |                       | No. of 1 inch Tarballs         | Threshold/Risk Factor  |
|-----------------|------------------|-----------------------------|-----------------------|--------------------------------|--|
| Oil Sheen       | Barely Visible   | 0.00001 mm                  | 0.01 g/m <sup>2</sup> | ~5-6 tarballs per acre         | Socio-economic Impacts to Water Surface/Risk Factor 4B-1 and 2 |
| Heavy Oil Sheen | Dark Colors      | 0.01 mm                     | 10 g/m <sup>2</sup>   | ~5,000-6,000 tarballs per acre | Ecological Impacts to Water Surface/ Risk Factor 3B-1 and 2    |

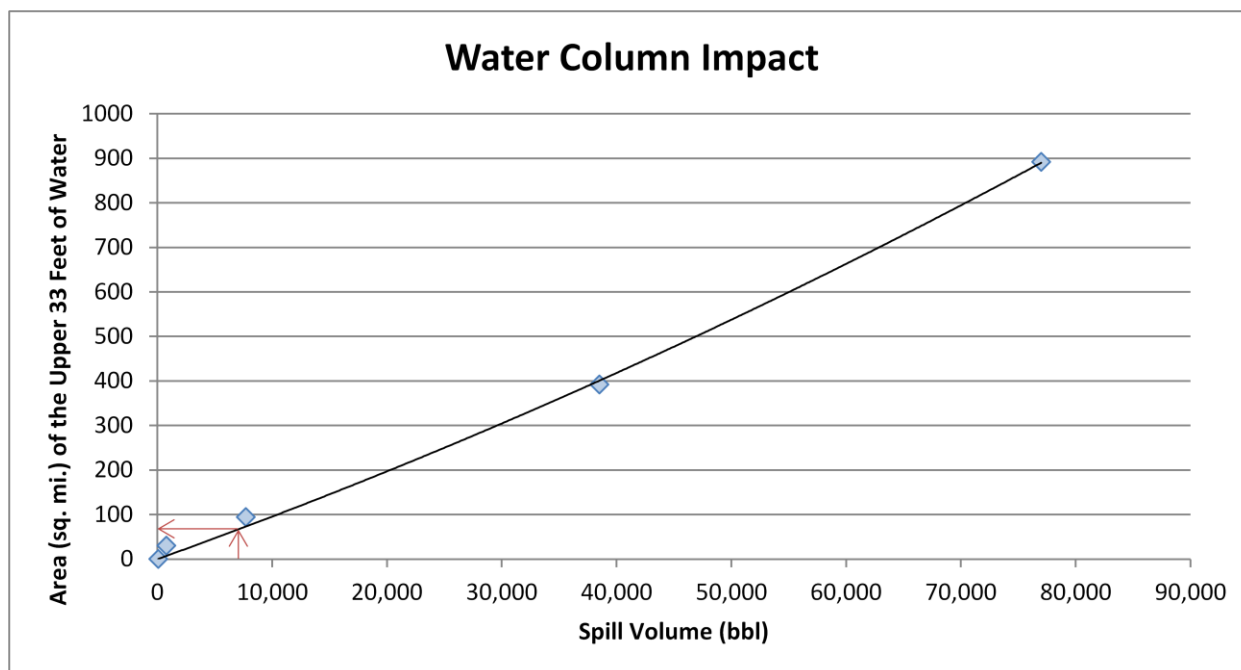
**Table 2-2b:** Oil thickness thresholds used in calculating miles of shoreline impacted. Refer to Sections 3 and 4 for explanations of the thresholds for ecological and socio-economic resource impacts.

| Oil Description    | Oil Appearance | Approximate Sheen Thickness |                      | No. of 1 inch Tarballs             | Threshold/Risk Factor  |
|--------------------|----------------|-----------------------------|----------------------|------------------------------------|--|
| Oil Sheen/Tarballs | Dull Colors    | 0.001 mm                    | 1 g/m <sup>2</sup>   | ~0.12-0.14 tarballs/m <sup>2</sup> | Socio-economic Impacts to Shoreline Users/Risk Factor 4C-1 and 2 |
| Oil Slick/Tarballs | Brown to Black | 0.1 mm                      | 100 g/m <sup>2</sup> | ~12-14 tarballs/m <sup>2</sup>     | Ecological Impacts to Shoreline Habitats/Risk Factor 3C-1 and 2  |

### Potential Impacts to the Water Column

Impacts to the water column from an oil release from the *Panam* will be determined by the volume of leakage. Because oil from sunken vessels will be released at low pressures, the droplet sizes will be large enough for the oil to float to the surface. Therefore, impacts to water column resources will result from the natural dispersion of the floating oil slicks on the surface, which is limited to about the top 33 feet. The metric used for ranking impacts to the water column is the area of water surface in mi<sup>2</sup> that has been contaminated by 1 part per billion (ppb) oil to a depth of 33 feet. At 1 ppb, there are likely to be impacts to sensitive organisms in the water column and potential tainting of seafood, so this concentration is used as a screening threshold for both the ecological and socio-economic risk factors for water column resource impacts. To assist planners in understanding the scale of potential impacts for different leakage volumes, a regression curve was generated for the water column volume oiled using the five volume scenarios, which is shown in Figure 2-2, which is the regression curve for the *Lancing*. Using this figure, the water column impacts can be estimated for any spill volume. On Figure 2-2, arrows are used to indicate the where the WCD for the *Panam* plots on the curve and how the area of the water column impact is determined.

<sup>2</sup> French, D., M. Reed, K. Jayko, S. Feng, H. Rines, S. Pavignano, T. Isaji, S. Puckett, A. Keller, F. W. French III, D. Gifford, J. McCue, G. Brown, E. MacDonald, J. Quirk, S. Natzke, R. Bishop, M. Welsh, M. Phillips and B.S. Ingram, 1996. The CERCLA type A natural resource damage assessment model for coastal and marine environments (NRDAM/CME), Technical Documentation, Vol. I - V. Final Report, Office of Environmental Policy and Compliance, U.S. Dept. Interior, Washington, DC.



**Figure 2-2:** Regression curve for estimating the area of water column at or above 1 ppb aromatics impacted as a function of spill volume for the *Panam*. This regression curve was generated for the *Lancing*, which has the same oil type and similar volume of potential releases as the *Panam*. The arrows indicate where the WCD for the *Panam* falls on the curve and how the area of water column impact can be determined for any spill volume.

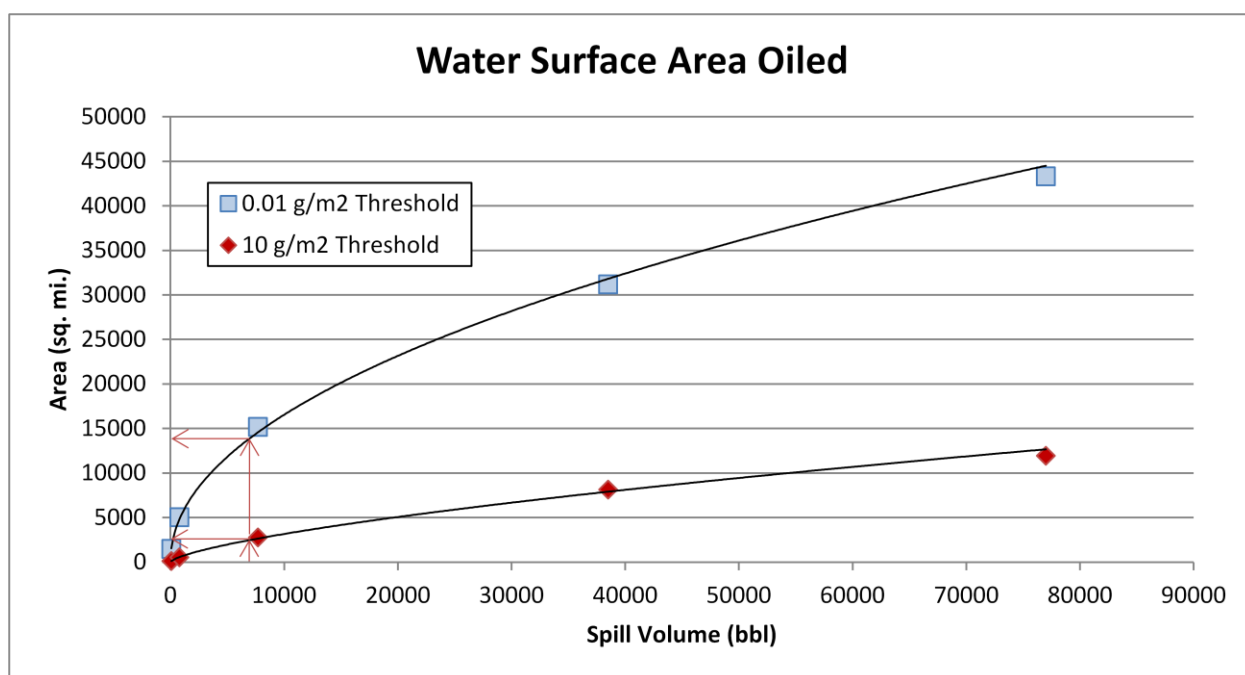
### Potential Water Surface Slick

The slick size from an oil release is a function of the quantity released. The estimated water surface coverage by a fresh slick (the total water surface area “swept” by oil over time) for the various scenarios is shown in Table 2-3, as the median result of the 200 model runs for the *Lancing* then using the regression curve shown in Figure 2-3 to calculate the values for the different release scenarios for the *Panam*. Note that this is an estimate of total water surface affected over a 30-day period. The slick will not be continuous but rather be broken and patchy. Surface expression is likely to be in the form of sheens, tarballs, and streamers. The location, size, shape, and spread of the oil slick(s) from an oil release from the *Panam* will depend on environmental conditions, including winds and currents, at the time of release and in its aftermath. Refer to the risk assessment package for the *Lancing* for maps (Figs. 2-2 and 2-3) showing the areas potentially affected by slicks using the Most Probable volume and the socio-economic and ecological thresholds.

**Table 2-3:** Estimated slick area swept on water for oil release scenarios from the *Panam*, based on the model results for the *Lancing*.

| Scenario Type        | Oil Volume (bbl) | Estimated Slick Area Swept<br>Mean of All Models |                       |
|----------------------|------------------|--|-----------------------|
|                      |                  | 0.01 g/m <sup>2</sup>                            | 10 g/m <sup>2</sup>   |
| Chronic              | 7                | 490 mi <sup>2</sup>                              | 23 mi <sup>2</sup>    |
| Episodic             | 70               | 1,500 mi <sup>2</sup>                            | 110 mi <sup>2</sup>   |
| Most Probable        | 700              | 4,600 mi <sup>2</sup>                            | 520 mi <sup>2</sup>   |
| Large                | 3,500            | 10,000 mi <sup>2</sup>                           | 1,500 mi <sup>2</sup> |
| Worst Case Discharge | 7,000            | 14,000 mi <sup>2</sup>                           | 2,500 mi <sup>2</sup> |

The actual area affected by a release will be determined by the volume of leakage, whether it is from one or more tanks at a time. To assist planners in understanding the scale of potential impacts for different leakage volumes, a regression curve was generated for the water surface area oiled using the five volume scenarios for the *Lancing*, which is shown in Figure 2-3 and referenced in Table 2-3. Using this figure, the area of water surface with a barely visible sheen can be estimated for any spill volume from the *Panam*.



**Figure 2-3:** Regression curve for estimating the amount of water surface oiling as a function of spill volume for the *Panam*, showing both the ecological threshold of 10 g/m<sup>2</sup> and socio-economic threshold of 0.01 g/m<sup>2</sup>, based on the model results for the *Lancing*. The arrows indicate where the WCD for the *Panam* falls on the curve and how the area of water surface impact can be determined for any spill volume. The curves for each threshold are so similar that they plot on top of each other.



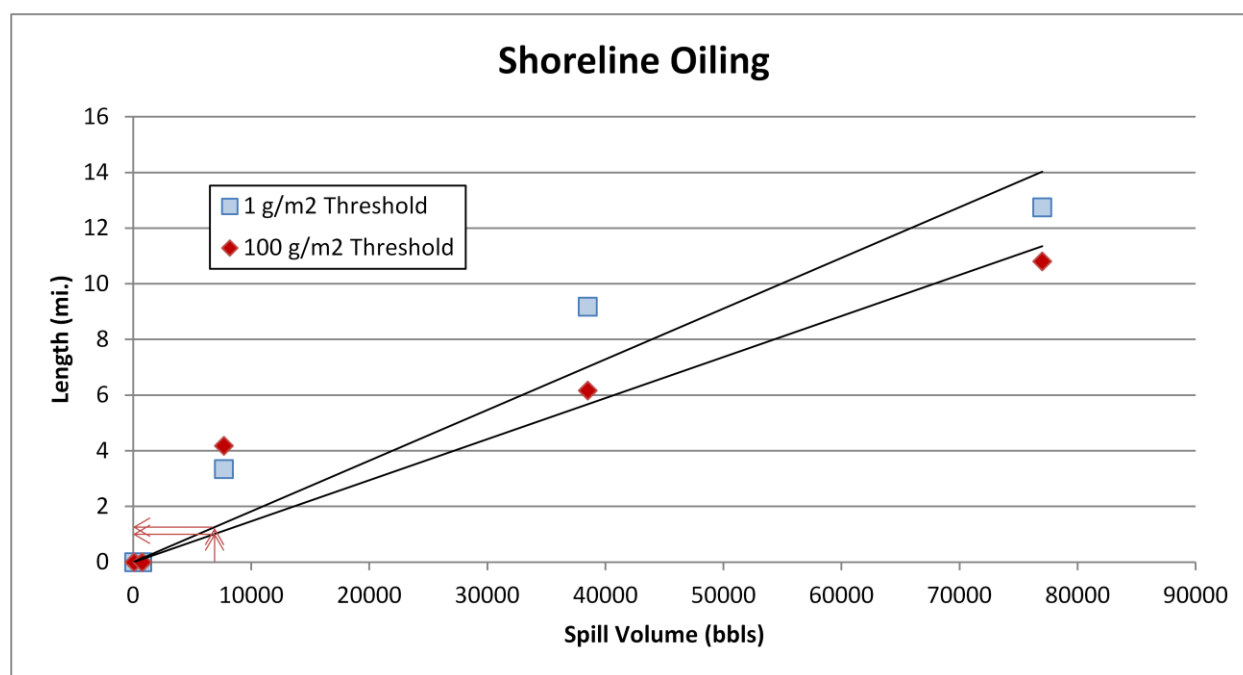
### Potential Shoreline Impacts

Based on these modeling results, shorelines from as far north as the Manasquan River, New Jersey, to as far south as Cape Lookout, North Carolina, are at risk. (Refer to Figure 2-6 in the *Lancing* package to see the probability of oil stranding on the shoreline at concentrations that exceed the threshold of  $1 \text{ g/m}^2$ , for the Most Probable release). However, the specific areas that would be oiled will depend on the currents and winds at the time of the oil release(s), as well as on the amount of oil released. Estimated miles of shoreline oiling above the socio-economic threshold of  $1 \text{ g/m}^2$  and the ecological threshold of  $100 \text{ g/m}^2$  by scenario type are shown in Table 2-4.

**Table 2-4:** Estimated shoreline oiling from leakage from the *Panam*, based on the modeling results for the *Lancing*.

| Scenario Type        | Volume (bbl) | Estimated Miles of Shoreline Oiling Above $1 \text{ g/m}^2$ | Estimated Miles of Shoreline Oiling Above $100 \text{ g/m}^2$ |
|----------------------|--------------|---|---|
| Chronic              | 7            | 0   | 0   |
| Episodic             | 70           | 0   | 0   |
| Most Probable        | 700          | 0   | 0   |
| Large                | 3,500        | 1   | 1   |
| Worst Case Discharge | 7,000        | 1   | 1   |

The actual shore length affected by a release will be determined by the volume of leakage and environmental conditions during an actual release. To assist planners in scaling the potential impact for different leakage volumes, a regression curve was generated for the total shoreline length oiled using the five volume scenarios for the *Lancing*, as detailed in Table 2-4 and shown in Figure 2-4. Using this figure, the shore length oiled can be estimated for any spill volume from the *Panam*.



**Figure 2-4:** Regression curve for estimating the amount of shoreline oiling at different thresholds as a function of spill volume for the *Panam*, based on the model results for the *Lancing*. The arrows indicate where the WCD for the *Panam* falls on the curve and how the length of shoreline impact can be determined for any spill volume.

## SECTION 3: ECOLOGICAL RESOURCES AT RISK

Ecological resources at risk from a catastrophic release of oil from the *Panam* (Table 3-1) include numerous guilds of birds, particularly those sensitive to surface oiling while rafting or plunge diving to feed and are present in nearshore/offshore waters. Large numbers of birds winter in both coastal and offshore waters and significant stretches of barrier island support nesting seabirds. Oceanic waters in the region are extremely productive due to the meeting of the Gulf Stream and colder northern waters north of Cape Hatteras. Temperature fronts and eddies provide important foraging habitat for numerous species of seabirds, marine mammal, and fish.

**Table 3-1:** Ecological resources at risk from a release of oil from the *Panam*.

(FT = Federal threatened; FE = Federal endangered; ST = State threatened; SE = State endangered).

| Species Group                                | Species Subgroup and Geography  | Seasonal Presence  |
|--|---|--|
| <b>Pelagic seabirds</b>                      | <p>Outer Continental Shelf (OCS) offshore of Cape Hatteras has the greatest diversity of seabirds and highest density of tropical seabirds in SE U.S., including shearwaters, storm-petrels, Bermuda petrels, and tropicbirds</p> <ul style="list-style-type: none"> <li>Mid-Atlantic inshore/offshore waters: 150K loons, 6K pelicans, 100s of thousands of cormorants and terns, millions of gulls</li> </ul> <p><i>Spring/Summer</i></p> <ul style="list-style-type: none"> <li>Seabird species groups using Mid-Atlantic U.S. waters include boobies (~300K) and alcids (tens of thousands)</li> <li>Significant percentage of the global population of black-capped petrels (FE) may be present around <i>Sargassum</i> mats off Cape Hatteras</li> <li>Audubon's shearwaters (50-75% of population) concentrate along the continental shelf break off NC (~3,800 pairs)</li> <li>Outer Banks/inshore waters NC-VA are foraging area for gulls and terns</li> </ul> <p><i>Migratory</i></p> <ul style="list-style-type: none"> <li>Nearshore waters are a key migration corridor for loons and sea ducks</li> <li>Hatteras NS and Eastern shore of VA: critical migratory area for red knot</li> </ul> <p><i>Wintering</i></p> <ul style="list-style-type: none"> <li>Bufflehead, mergansers, goldeneyes (12K) use waters from 0-14 nm offshore</li> <li>Surf scoter (up to tens of thousands) and black scoter (thousands) use waters &gt; 2nm from shore in NC waters</li> <li>Shoals are aggregation areas for loons, pelicans, cormorants, sea ducks, gulls, terns, alcids; scoters are 10X more abundant than other species on shoals and large numbers concentrate off VA/Chesapeake Bay</li> <li>Wintering skuas, northern gannets, razorbills, red-breasted merganser and red phalaropes are common in offshore waters near Cape Hatteras</li> </ul> | <p>OCS assemblages change seasonally</p> <p>Petrels more common summer to early fall; black-capped petrels can be found year round in the Gulf Stream</p> <p>Shearwaters off of NC/VA in late summer</p> <p>Terns more common spring/summer</p> <p>Red knot present Jul and Apr</p> <p>Sea ducks, loons present in winter; migrate in fall and spring (Oct-Apr)</p> <p>Winter use of shoals (Dec-Mar); summer use of shoals likely farther north</p> <p>Gannets and red-breasted merganser wintering</p> |
| <b>Shorebirds and Colonial Nesting Birds</b> | <ul style="list-style-type: none"> <li>Outer Banks, Cape Hatteras, and Cape Lookout: globally important for coastal birds with 365+ species</li> <li>Least terns (FT; 464 nests) nesting on NC beaches of Hatteras National Seashore and north to Manteo</li> <li>Piping plover (FT) critical nesting areas on VA eastern shore</li> <li>Piping plover, willet, American oystercatcher, black skimmer, least tern, common tern all nesting along the Atlantic shoreline</li> </ul>  | <p>Colonial and beach nesters peak Apr-Aug</p> <p>Winter migration stop for plovers</p>  |
| <b>Sea Turtles</b>                           | Nesting mostly occurs in NC (annual counts along shorelines with most probable impacts).  | <p>Nesting season:</p> <p>Adults: May-Sept</p>   |

| Species Group           | Species Subgroup and Geography   | Seasonal Presence  |
|-------------------------|--|--|
|                         | <ul style="list-style-type: none"> <li>650+ Loggerhead (FT); &lt;20 Green (FT); &lt;10 Leatherback (FE)</li> </ul> <p>Distribution:</p> <ul style="list-style-type: none"> <li>Offshore hot spots not well known</li> <li>Newly hatched loggerheads can be found in the Gulf Stream</li> <li>Young associate with <i>Sargassum</i> mats off of Cape Hatteras</li> <li>Bays and sounds are foraging grounds for juvenile green, loggerhead, and Kemp's ridley (FE)</li> </ul>   | <p>Hatching: May-Dec</p> <p>In water:<br/>Year round with Apr-Dec peak</p>   |
| <b>Marine Mammals</b>   | <p><i>Baleen whales</i>: Primarily North Atlantic right whale (FE) and fin whale (FE) with occasional humpback whale (FE), sei whale (FE) and minke whale</p> <ul style="list-style-type: none"> <li>Right whales are critically endangered (&lt;400 individuals left); coastal waters are used as a migratory pathway and border the northern extent of calving grounds</li> <li>Juvenile humpbacks forage offshore during the winter</li> </ul> <p><i>Inshore cetaceans</i>: Bottlenose dolphin and harbor porpoise use coastal waters out to the shelf break</p> <p><i>Offshore cetaceans</i>: Pilot whale, Risso's dolphin, striped dolphin, common dolphin, Atlantic spotted dolphin, spinner dolphin, false killer whale</p> <ul style="list-style-type: none"> <li>Often associated with shelf edge features, convergence zones (fronts), and <i>Sargassum</i> mats (summer)</li> </ul>   | <p>Baleen whales present fall-spring. Adults migrate from feeding grounds in North Atlantic to calving grounds further south</p> <p>Bottlenose dolphins present year round</p>   |
| <b>Fish and Inverts</b> | <p>Coastal ocean waters support many valuable fisheries and/or species of concern in the region:</p> <ul style="list-style-type: none"> <li><i>Benthic or bottom associated</i>: Sea scallop, scup, black sea bass, butterfish, goosefish, scamp, horseshoe crab, tilefish, other reef species</li> <li><i>Midwater</i>: Atlantic mackerel, Spanish mackerel, shortfin squid, bluefish, menhaden, spiny dogfish, smooth dogfish,</li> <li><i>Pelagic</i>: Bluefin tuna, yellowfin tuna, wahoo, dolphinfish, bigeye tuna, swordfish, marlins, sunfish</li> <li><i>Diadromous</i>: Alewife, blueback herring, American shad, hickory shad, Atlantic tomcod, American eel, Atlantic sturgeon (Fed. species of concern), shortnose sturgeon (FE), striped bass</li> <li><i>Estuarine dependent</i>: Southern flounder, spotted seatrout, blue crab, Atlantic croaker, spot, weakfish, shrimp</li> <li><i>Estuarine resident</i>: Eastern oyster, northern quahog</li> </ul> <p>Important concentration/conservation areas are:</p> <ul style="list-style-type: none"> <li>Pelagic species can be more concentrated around the shelf break and at oceanographic fronts in the region</li> <li>The Point (offshore of Cape Hatteras) – Essential Fish Habitat/Habitats Areas of Particular Concern (EFH/HAPC) for coastal migratory pelagics and dolphin/wahoo</li> <li>Many anadromous and estuarine dependent species overwinter in nearshore Atlantic waters</li> <li><i>Sargassum</i> mats off Cape Hatteras provide foraging opportunities and shelter for juvenile fish and invertebrates</li> <li>Coastal sharks use nearshore and estuarine waters as pupping and nursery grounds</li> </ul> | <p>Benthic and midwater species are present throughout the year</p> <p>Bluefin tunas present fall-spring; dolphin more common in the summer; other pelagic fish present year round</p> <p>Anadromous fish migrate inshore to spawn in fresh water in the spring</p> <p>American eel migrates offshore to spawn in the winter</p> <p>Estuarine dependent fish migrate offshore in the fall/winter to spawn; juveniles and adults use estuaries during the spring/summer</p> |
| <b>Benthic Habitats</b> | <p>Submerged aquatic vegetation is critical to numerous species and occurs inside of bays and sounds throughout the region</p> <p>Scattered hard-bottom sites are located off NC and are considered HAPC for reef-associated fishes (including the areas listed above)</p>   | <p>Year round</p>  |

The Environmental Sensitivity Index (ESI) atlases for the potentially impacted coastal areas from a leak from the *Panam* are generally available at each U.S. Coast Guard Sector. They can also be downloaded at: <http://response.restoration.noaa.gov/esi>. These maps show detailed spatial information on the distribution of sensitive shoreline habitats, biological resources, and human-use resources. The tables on the back of the maps provide more detailed life-history information for each species and location. The ESI atlases should be consulted to assess the potential environmental resources at risk for specific spill scenarios. In addition, the Geographic Response Plans within the Area Contingency Plans prepared by the Area Committee for each U.S. Coast Guard Sector have detailed information on the nearshore and shoreline ecological resources at risk and should be consulted.

## Ecological Risk Factors

### Risk Factor 3: Impacts to Ecological Resources at Risk (EcoRAR)

Ecological resources include plants and animals (e.g., fish, birds, invertebrates, and mammals), as well as the habitats in which they live. All impact factors are evaluated for both the Worst Case and the Most Probable Discharge oil release from the wreck. Risk factors for ecological resources at risk (EcoRAR) are divided into three categories:

- Impacts to the water column and resources in the water column;
- Impacts to the water surface and resources on the water surface; and
- Impacts to the shoreline and resources on the shoreline.

The impacts from an oil release from the wreck would depend greatly on the direction in which the oil slick moves, which would, in turn, depend on wind direction and currents at the time of and after the oil release. Impacts are characterized in the risk analysis based on the likelihood of any measurable impact, as well as the degree of impact that would be expected if there is an impact. The measure of the degree of impact is based on the median case for which there is at least some impact. The median case is the “middle case” – half of the cases with significant impacts have less impact than this case, and half have more.

For each of the three ecological resources at risk categories, risk is defined as:

- The **probability of oiling** over a certain threshold (i.e., the likelihood that there will be an impact to ecological resources over a certain minimal amount); and
- The **degree of oiling** (the magnitude or amount of that impact).

As a reminder, the ecological impact thresholds are: 1 ppb aromatics for water column impacts; 10 g/m<sup>2</sup> for water surface impacts; and 100 g/m<sup>2</sup> for shoreline impacts.

In the following sections, the definition of low, medium, and high for each ecological risk factor is provided. Also, the classification for the *Panam* is provided, both as text and as **shading** of the applicable degree of risk bullet, for the WCD release of 7,000 bbl and **a border** around the Most Probable Discharge of 700 bbl. Please note: The probability of oiling cannot be determined using the regression curves; probability can only be determined from the 200 model runs. Thus, the modeling results and regression

curves for the *Lancing* are used to estimate the values used in the risk scoring for the **degree of oiling only**.

### Risk Factor 3A: Water Column Impacts to EcoRAR

Water column impacts occur beneath the water surface. The ecological resources at risk for water column impacts are fish, marine mammals, and invertebrates (e.g., shellfish, and small organisms that are food for larger organisms in the food chain). These organisms can be affected by toxic components in the oil. The threshold for water column impact to ecological resources at risk is a dissolved aromatic hydrocarbons concentration of 1 ppb (i.e., 1 part total dissolved aromatics per one billion parts water). Dissolved aromatic hydrocarbons are the most toxic part of the oil. At this concentration and above, one would expect impacts to organisms in the water column.

#### Risk Factor 3A-1: Water Column Probability of Oiling of EcoRAR (not scored)

This risk factor reflects the probability that at least 0.2 mi<sup>2</sup> of the upper 33 feet of the water column would be contaminated with a high enough concentration of oil to cause ecological impacts. The three risk scores for water column oiling probability are:

- **Low Oiling Probability:** Probability = <10%
- **Medium Oiling Probability:** Probability = 10 – 50%
- **High Oiling Probability:** Probability > 50%

#### Risk Factor 3A-2: Water Column Degree of Oiling of EcoRAR

The degree of oiling of the water column reflects the total volume of water that would be contaminated by oil at a concentration high enough to cause impacts. The three categories of impact are:

- **Low Impact:** impact on less than 0.2 mi<sup>2</sup> of the upper 33 feet of the water column at the threshold level
- **Medium Impact:** impact on 0.2 to 200 mi<sup>2</sup> of the upper 33 feet of the water column at the threshold level
- **High Impact:** impact on more than 200 mi<sup>2</sup> of the upper 33 feet of the water column at the threshold level

The *Panam* is classified as Medium Risk for degree of oiling for water column ecological resources for the WCD of 7,000 bbl because the mean volume of water contaminated in the model runs was 67 mi<sup>2</sup> of the upper 33 feet of the water column. For the Most Probable Discharge of 700 bbl, the *Panam* is classified as Medium Risk for degree of oiling because the mean volume of water contaminated was 7 mi<sup>2</sup> of the upper 33 feet of the water column.

### Risk Factor 3B: Water Surface Impacts to EcoRAR

Ecological resources at risk at the water surface include surface feeding and diving sea birds, sea turtles, and marine mammals. These organisms can be affected by the toxicity of the oil as well as from coating with oil. The threshold for water surface oiling impact to ecological resources at risk is 10 g/m<sup>2</sup> (10 grams of floating oil per square meter of water surface). At this concentration and above, one would expect impacts to birds and other animals that spend time on the water surface.

#### Risk Factor 3B-1: Water Surface Probability of Oiling of EcoRAR (not scored)

This risk factor reflects the probability that at least 1,000 mi<sup>2</sup> of the water surface would be affected by

enough oil to cause impacts to ecological resources. The three risk scores for oiling are:

- **Low Oiling Probability:** Probability = <10%
- **Medium Oiling Probability:** Probability = 10 – 50%
- **High Oiling Probability:** Probability > 50%

#### **Risk Factor 3B-2: Water Surface Degree of Oiling of EcoRAR**

The degree of oiling of the water surface reflects the total amount of oil that would affect the water surface in the event of a discharge from the vessel. The three categories of impact are:

- **Low Impact:** less than 1,000 mi<sup>2</sup> of water surface impact at the threshold level
- **Medium Impact:** 1,000 to 10,000 mi<sup>2</sup> of water surface impact at the threshold level
- **High Impact:** more than 10,000 mi<sup>2</sup> of water surface impact at the threshold level

The *Panam* is classified as Medium Risk for degree of oiling for water surface ecological resources for the WCD because the mean area of water contaminated in the model runs was 2,500 mi<sup>2</sup>. It is classified as Low Risk for degree of oiling for the Most Probable Discharge because the mean area of water contaminated was 520 mi<sup>2</sup>.

#### **Risk Factor 3C: Shoreline Impacts to EcoRAR**

The impacts to different types of shorelines vary based on their type and the organisms that live on them. For the modeled wrecks, shorelines were weighted by their degree of sensitivity to oiling. Wetlands are the most sensitive (weighted as “3” in the impact modeling), rocky and gravel shores are moderately sensitive (weighted as “2”), and sand beaches (weighted as “1”) are the least sensitive to ecological impacts of oil. In this risk analysis for the *Panam*, shorelines have NOT been weighted by their degree of sensitivity to oiling because these data are available only for modeled vessels. Therefore, the impacts are evaluated only on the total number of shoreline miles oiled as determined from the regression curve.

#### **Risk Factor 3C-1: Shoreline Probability of Oiling of EcoRAR (not scored)**

This risk factor reflects the probability that the shoreline would be coated by enough oil to cause impacts to shoreline organisms. The threshold for shoreline oiling impacts to ecological resources at risk is 100 g/m<sup>2</sup> (i.e., 100 grams of oil per square meter of shoreline). The three risk scores for oiling are:

- **Low Oiling Probability:** Probability = <10%
- **Medium Oiling Probability:** Probability = 10 – 50%
- **High Oiling Probability:** Probability > 50%

#### **Risk Factor 3C-2: Shoreline Degree of Oiling of EcoRAR**

The degree of oiling of the shoreline reflects the length of shorelines oiled by at least 100 g/m<sup>2</sup> in the event of a discharge from the vessel. The three categories of impact are:

- **Low Impact:** less than 10 miles of shoreline impacted at the threshold level
- **Medium Impact:** 10 - 100 miles of shoreline impacted at the threshold level
- **High Impact:** more than 100 miles of shoreline impacted at the threshold level

The *Panam* is classified as Low Risk for degree of oiling for shoreline ecological resources for the WCD because the mean length of shoreline contaminated in the model runs was 1 mile. It is classified as Low

Risk for degree of oiling for the Most Probable Discharge because the mean length of shoreline contaminated in the model runs was 1 mile.

Considering the modeled risk scores and the ecological resources at risk, the ecological risk from potential releases of the WCD of 7,000 bbl of light fuel oil from the *Panam* is summarized as listed below and indicated in the far-right column in Table 3-2:

- Water column resources – Medium, because although there were moderate areas of potential water column impacts, they are expected to occur mostly offshore where sensitive water column resources are less concentrated
- Water surface resources – Medium, because of the seasonally large number of wintering, nesting, and migratory birds that use ocean, coastal, and estuarine habitats at risk and offshore concentrations of sea turtles. It should be noted that oil on the surface will not be continuous but rather be broken and patchy and in the form of sheens and streamers
- Shoreline resources – Low, because of the low likelihood of significant amounts of light fuel oil to strand onshore

**Table 3-2: Ecological risk factor scores for the Worst Case Discharge of 7,000 bbl of light fuel oil from the *Panam*.**

| Risk Factor                                   | Risk Score |        |      | Explanation of Risk Score   | Final Score |
|---|------------|--------|------|---|-------------|
| 3A-1: Water Column Probability EcoRAR Oiling  | Low        | Medium | High | N/A: Only available for modeled vessels   | Med         |
| 3A-2: Water Column Degree EcoRAR Oiling       | Low        | Medium | High | The mean volume of water contaminated above 1 ppb was 67 mi <sup>2</sup> of the upper 33 feet of the water column |             |
| 3B-1: Water Surface Probability EcoRAR Oiling | Low        | Medium | High | N/A: Only available for modeled vessels   | Med         |
| 3B-2: Water Surface Degree EcoRAR Oiling      | Low        | Medium | High | The mean area of water contaminated above 10 g/m <sup>2</sup> was 2,500 mi <sup>2</sup>                           |             |
| 3C-1: Shoreline Probability EcoRAR Oiling     | Low        | Medium | High | N/A: Only available for modeled vessels   | Low         |
| 3C-2: Shoreline Degree EcoRAR Oiling          | Low        | Medium | High | The length of shoreline contaminated by at least 100 g/m <sup>2</sup> was 1 mi                                    |             |



For the Most Probable Discharge of 700 bbl of light fuel oil, the ecological risk from potential releases from the *Panam* is summarized as listed below and indicated in the far-right column in Table 3-3:

- Water column resources – Low, because the small area of potential impact is likely offshore where sensitive water column resources are less concentrated
- Water surface resources – Low, because of the relatively small area above thresholds. It should be noted that oil on the surface will not be continuous but rather be broken and patchy and in the form of sheens and streamers
- Shoreline resources – Low, because of the low likelihood of significant amounts of light fuel oil to strand onshore

**Table 3-3:** Ecological risk factor scores for the **Most Probable Discharge of 700 bbl** of light fuel oil from the *Panam*.

| Risk Factor                                   | Risk Score |        |      | Explanation of Risk Score  | Final Score |
|---|------------|--------|------|--|-------------|
| 3A-1: Water Column Probability EcoRAR Oiling  | Low        | Medium | High | N/A: Only available for modeled vessels  | Low         |
| 3A-2: Water Column Degree EcoRAR Oiling       | Low        | Medium | High | The mean volume of water contaminated above 1 ppb was 7 mi <sup>2</sup> of the upper 33 feet of the water column |             |
| 3B-1: Water Surface Probability EcoRAR Oiling | Low        | Medium | High | N/A: Only available for modeled vessels  | Low         |
| 3B-2: Water Surface Degree EcoRAR Oiling      | Low        | Medium | High | The mean area of water contaminated above 10 g/m <sup>2</sup> was 520 mi <sup>2</sup>                            |             |
| 3C-1: Shoreline Probability EcoRAR Oiling     | Low        | Medium | High | N/A: Only available for modeled vessels  | Low         |
| 3C-2: Shoreline Degree EcoRAR Oiling          | Low        | Medium | High | The length of shoreline contaminated by at least 100 g/m <sup>2</sup> was 1 mi                                   |             |

## SECTION 4: SOCIO-ECONOMIC RESOURCES AT RISK

In addition to natural resource impacts, spills from sunken wrecks have the potential to cause significant social and economic impacts. Socio-economic resources potentially at risk from oiling are listed in Table 4-1 and shown in Figures 4-1 and 4-2. The potential economic impacts include disruption of coastal economic activities such as commercial and recreational fishing, boating, vacationing, commercial shipping, and other activities that may become claims following a spill.

Socio-economic resources in the areas potentially affected by a release from the *Panam* include recreational beaches from North Carolina to Delaware that are very highly utilized during summer, and are still in use during spring and fall for shore fishing. Hotspots for chartered fishing vessels and recreational fishing party vessels include along the New Jersey shore, off the mouth of Delaware Bay, and off the outer banks of North Carolina. Many areas along the entire potential spill zone are widely popular seaside resorts and support recreational activities such as boating, diving, sightseeing, sailing, fishing, and wildlife viewing. There are two national seashores that could be affected.

A release could impact shipping lanes, which accommodate several significant port areas that could potentially be affected with about 2,700 port calls annually with 108 million tonnage. Commercial fishing is economically important to the region. A release could impact fishing fleets where regional commercial landings exceed \$77 million annually.

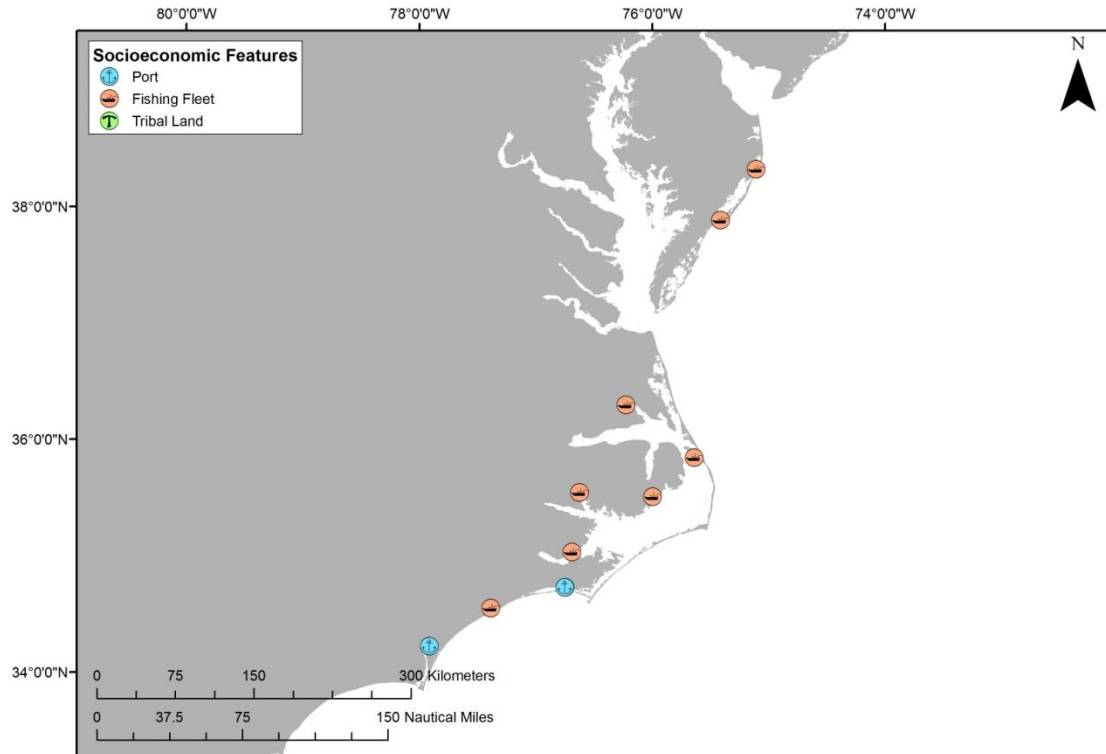
In addition to the ESI atlases, the Geographic Response Plans within the Area Contingency Plans prepared by the Area Committee for each U.S. Coast Guard Sector have detailed information on important socio-economic resources at risk.

Spill response costs for a release of oil from the *Panam* would be dependent on volume of oil released and specific areas impacted. The specific shoreline impacts and spread of the oil would determine the response required and the costs for that response.

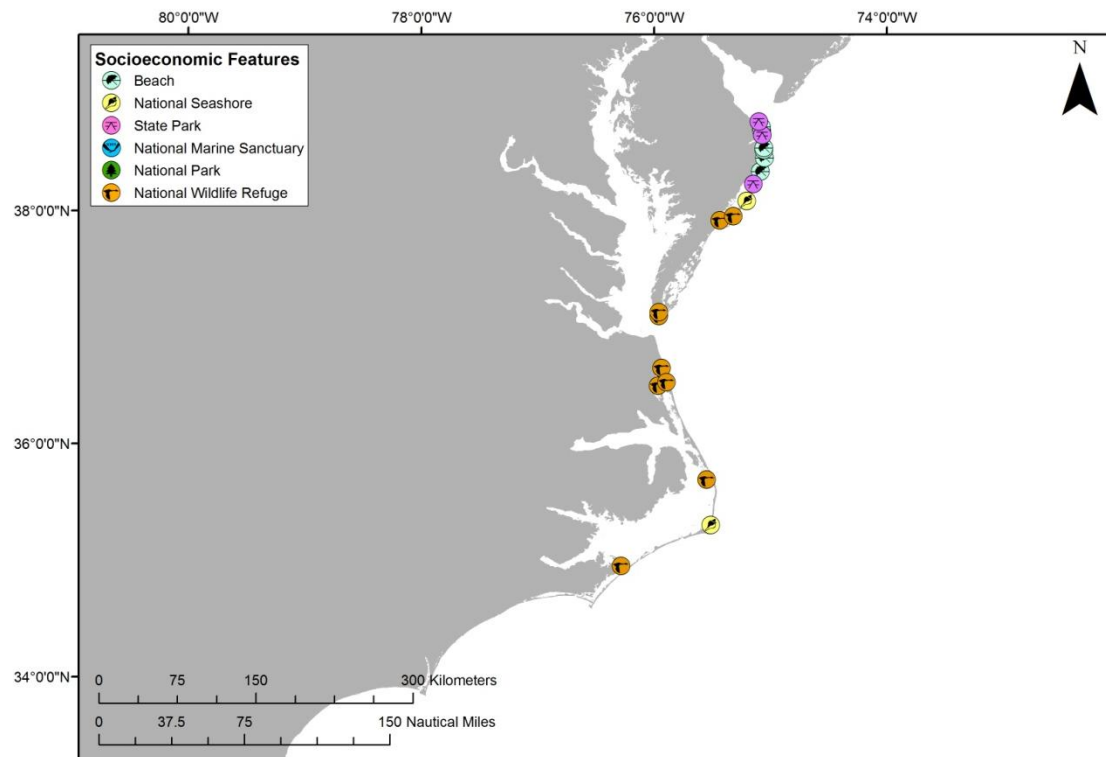
**Table 4-1:** Socio-economic resources at risk from a release of oil from the *Panam*.

| Resource Type             | Resource Name   | Economic Activities  |
|---------------------------|---|--|
| <b>Tourist Beaches</b>    | Ocean City, MD<br>Rehoboth Beach, DE<br>Dewey Beach, DE<br>Indian Beach, DE<br>Bethany Beach, DE<br>Middlesex Beach, DE<br>Fenwick Island, DE | Potentially affected beach resorts and beach-front communities in Maryland, Delaware, and North Carolina provide recreational activities (e.g., swimming, boating, recreational fishing, wildlife viewing, nature study, sports, dining, camping, and amusement parks) with substantial income for local communities and state tax income. Many of these recreational activities are limited to or concentrated into the late spring into early fall months. |
| <b>National Seashores</b> | Cape Hatteras National Seashore, NC<br>Assateague Island National Seashore, MD and VA   | National seashores provide recreation for local and tourist populations as well as preserve and protect the nation's natural shoreline treasures. National seashores are coastal areas federally designated as being of natural and recreational significance as a preserved area. Assateague Island is known for its feral horses, Cape Hatteras is known for its Bodie   |

| Resource Type                   | Resource Name  | Economic Activities  |
|---------------------------------|--|--|
|                                 |  | Island and Cape Hatteras Lighthouses. Popular recreation activities include windsurfing, birdwatching, fishing, shell collecting, and kayaking. The barrier island provides refuge for the endangered piping plover, seabeach amaranth, and sea turtles.   |
| <b>National Wildlife Refuge</b> | Fisherman Island NWR (VA)<br>Eastern Shore of Virginia NWR (VA)<br>Wallops Island NWR (VA)<br>Chincoteague NWR (VA)<br>Back Bay NWR (VA)<br>Mackay Island NWR (NC)<br>Currituck NWR (NC)<br>Pea Island NWR (NC)<br>Cedar Island NWR (NC)               | National wildlife refuges in two states may be impacted. These federally managed and protected lands provide refuges and conservation areas for sensitive species and habitats.  |
| <b>State Parks</b>              | Assateague State Park, Maryland<br>Delaware Seashore State Park, DE<br>Cape Henlopen State Park, DE  | Coastal state parks are significant recreational resources for the public (e.g., swimming, boating, recreational fishing, wildlife viewing, nature study, sports, dining, camping, and amusement parks). They provide income to the states. State parks in the states of Delaware and Maryland are potentially impacted. Many of these recreational activities are limited to or concentrated into the late spring into early fall months. |
| <b>Commercial Fishing</b>       | A number of fishing fleets use potentially affected waters for commercial fishing purposes.  |  |
|                                 | Chincoteague, Virginia   | Total Landings (2010): \$3.5M  |
|                                 | Ocean City, Maryland   | Total Landings (2010): \$8.8M  |
|                                 | Beaufort-Morehead City, NC   | Total Landings (2010): \$9.2M  |
|                                 | Belhaven-Washington, NC  | Total Landings (2010): \$3.7M  |
|                                 | Elizabeth City, NC   | Total Landings (2010): \$5.4M  |
|                                 | Engelhard-Swanquarter, NC  | Total Landings (2010): \$10.6M   |
|                                 | Oriental-Vandemere, NC   | Total Landings (2010): \$8.4M  |
|                                 | Sneads Ferry-Swansboro, NC   | Total Landings (2010): \$5.4M  |
|                                 | Wanchese-Stumpy Point, NC  | Total Landings (2010): \$22.0M   |
| <b>Ports</b>                    | There are three commercial ports that could potentially be impacted by spillage and spill response activities. The port call numbers below are for large vessels only. There are many more, smaller vessels (under 400 GRT) that also use these ports. |  |
|                                 | Baltimore, MD  | 2,100 port calls annually  |
|                                 | Morehead City, NC  | 85 port calls annually   |
|                                 | Wilmington, NC   | 550 port calls annually  |



**Figure 4-1:** Tribal lands, ports, and commercial fishing fleets at risk from a release from the *Panam*. (Note that there are no tribal lands at risk.)



**Figure 4-2:** Beaches, coastal state parks, and Federal protected areas at risk from a release from the *Panam*.

## Socio-Economic Risk Factors

### Risk Factor 4: Impacts to Socio-economic Resources at Risk (SRAR)

Socio-economic resources at risk (SRAR) include potentially impacted resources that have some economic value, including commercial and recreational fishing, tourist beaches, private property, etc. All impact factors are evaluated for both the Worst Case and the Most Probable Discharge oil release from the wreck. Risk factors for socio-economic resources at risk are divided into three categories:

- **Water Column:** Impacts to the water column and to socio-economic resources in the water column (i.e., fish and invertebrates that have economic value);
- **Water Surface:** Impacts to the water surface and resources on the water surface (i.e., boating and commercial fishing); and
- **Shoreline:** Impacts to the shoreline and resources on the shoreline (i.e., beaches, real property).

The impacts from an oil release from the wreck would depend greatly on the direction in which the oil slick moves, which would, in turn, depend on wind direction and currents at the time of and after the oil release. Impacts are characterized in the risk analysis based on the likelihood of any measurable impact, as well as the degree of impact that would be expected if there were one. The measure of the degree of impact is based on the median case for which there is at least some impact. The median case is the “middle case” – half of the cases with significant impacts have less impact than this case, and half have more.

For each of the three socio-economic resources at risk categories, risk is classified with regard to:

- The **probability of oiling** over a certain threshold (i.e., the likelihood that there will be exposure to socio-economic resources over a certain minimal amount known to cause impacts); and
- The **degree of oiling** (the magnitude or amount of that exposure over the threshold known to cause impacts).

As a reminder, the socio-economic impact thresholds are: 1 ppb aromatics for water column impacts; 0.01 g/m<sup>2</sup> for water surface impacts; and 1 g/m<sup>2</sup> for shoreline impacts.

In the following sections, the definition of low, medium, and high for each socio-economic risk factor is provided. Also, in the text classification for the *Panam*, **shading** indicates the degree of risk for a WCD release of 7,000 bbl and **a border** indicates degree of risk for the Most Probable Discharge of 700 bbl. Please note: The probability of oiling cannot be determined using the regression curves; probability can only be determined from the 200 model runs. Thus, the modeling results and regression curves for the *Lancing* are used to estimate the values used in the risk scoring for the **degree of oiling only**.

#### **Risk Factor 4A-1: Water Column: Probability of Oiling of SRAR (not scored)**

This risk factor reflects the probability that at least 0.2 mi<sup>2</sup> of the upper 33 feet of the water column would be contaminated with a high enough concentration of oil to cause socio-economic impacts. The threshold for water column impact to socio-economic resources at risk is an oil concentration of 1 ppb (i.e., 1 part oil per one billion parts water). At this concentration and above, one would expect impacts

and potential tainting to socio-economic resources (e.g., fish and shellfish) in the water column; this concentration is used as a screening threshold for both the ecological and socio-economic risk factors.

The three risk scores for oiling are:

- **Low Oiling Probability:** Probability = <10%
- **Medium Oiling Probability:** Probability = 10 – 50%
- **High Oiling Probability:** Probability > 50%

#### Risk Factor 4A-2: Water Column Degree of Oiling of SRAR

The degree of oiling of the water column reflects the total amount of oil that would affect the water column in the event of a discharge from the vessel. The three categories of impact are:

- **Low Impact:** impact on less than 0.2 mi<sup>2</sup> of the upper 33 feet of the water column at the threshold level
- **Medium Impact:** impact on 0.2 to 200 mi<sup>2</sup> of the upper 33 feet of the water column at the threshold level
- **High Impact:** impact on more than 200 mi<sup>2</sup> of the upper 33 feet of the water column at the threshold level

The *Panam* is classified as Medium Risk for degree of oiling for water column socio-economic resources for the WCD of 7,000 bbl because the mean volume of water contaminated in the model runs was 67 mi<sup>2</sup> of the upper 33 feet of the water column. For the Most Probable Discharge of 700 bbl, the *Panam* is classified as Medium Risk for degree of oiling because the mean volume of water contaminated was 7 mi<sup>2</sup> of the upper 33 feet of the water column.

#### Risk Factor 4B-1: Water Surface Probability of Oiling of SRAR (not scored)

This risk factor reflects the probability that at least 1,000 mi<sup>2</sup> of the water surface would be affected by enough oil to cause impacts to socio-economic resources. The three risk scores for oiling are:

- **Low Oiling Probability:** Probability = <10%
- **Medium Oiling Probability:** Probability = 10 – 50%
- **High Oiling Probability:** Probability > 50%

The threshold level for water surface impacts to socio-economic resources at risk is 0.01 g/m<sup>2</sup> (i.e., 0.01 grams of floating oil per square meter of water surface). At this concentration and above, one would expect impacts to socio-economic resources on the water surface.

#### Risk Factor 4B-2: Water Surface Degree of Oiling of SRAR

The degree of oiling of the water surface reflects the total amount of oil that would affect the water surface in the event of a discharge from the vessel. The three categories of impact are:

- **Low Impact:** less than 1,000 mi<sup>2</sup> of water surface impact at the threshold level
- **Medium Impact:** 1,000 to 10,000 mi<sup>2</sup> of water surface impact at the threshold level
- **High Impact:** more than 10,000 mi<sup>2</sup> of water surface impact at the threshold level

The *Panam* is classified as High Risk for degree of oiling for water surface socio-economic resources for the WCD because the mean area of water contaminated in the model runs was 13,900 mi<sup>2</sup>. The *Panam* is classified as Medium Risk for degree of oiling for water surface socio-economic resources for the Most Probable Discharge because the mean area of water contaminated was 4,600 mi<sup>2</sup>.

#### **Risk Factor 4C: Shoreline Impacts to SRAR**

The impacts to different types of shorelines vary based on economic value. For the modeled wrecks, shorelines have been weighted by their degree of sensitivity to oiling. Sand beaches are the most economically valued shorelines (weighted as “3” in the impact analysis), rocky and gravel shores are moderately valued (weighted as “2”), and wetlands are the least economically valued shorelines (weighted as “1”). In this risk analysis for the *Panam*, shorelines have NOT been weighted by their degree of sensitivity to oiling because these data are available only for modeled vessels. Therefore, the impacts are evaluated only on the total number of shoreline miles oiled as determined from the regression curve.

#### **Risk Factor 4C-1: Shoreline Probability of Oiling of SRAR (not scored)**

This risk factor reflects the probability that the shoreline would be coated by enough oil to cause impacts to shoreline users. The threshold for impacts to shoreline SRAR is 1 g/m<sup>2</sup> (i.e., 1 gram of oil per square meter of shoreline). The three risk scores for oiling are:

- **Low Oiling Probability:** Probability = <10%
- **Medium Oiling Probability:** Probability = 10 – 50%
- **High Oiling Probability:** Probability > 50%

#### **Risk Factor 4C-2: Shoreline Degree of Oiling of SRAR**

The degree of oiling of the shoreline reflects the total amount of oil that would affect the shoreline in the event of a discharge from the vessel. The three categories of impact are:

- |  |
|--|
| <ul style="list-style-type: none"> <li>• <b>Low Impact:</b> less than 10 miles of shoreline impacted at threshold level</li> </ul> |
|--|
- **Medium Impact:** 10 - 100 miles of shoreline impacted at threshold level
  - **High Impact:** more than 100 miles of shoreline impacted at threshold level

The *Panam* is classified as Low Risk for degree of oiling for shoreline socio-economic resources for the WCD because the mean length of shoreline contaminated in the model runs was 1 mile. The *Panam* is classified as Low Risk for degree of oiling for shoreline socio-economic resources for the Most Probable Discharge because the mean length of shoreline contaminated was 0 miles.



Considering the modeled risk scores and the socio-economic resources at risk, the socio-economic risk from potential releases of the WCD of 7,000 bbl of light fuel oil from the *Panam* is summarized as listed below and indicated in the far-right column in Table 4-2:

- Water column resources – Low, because a relatively small area of water column would be impacted in fishing areas
- Water surface resources – High, because a relatively large area of offshore water surface would be covered in an area with shipping lanes and fishing activities. It should be noted that oil on the surface will not be continuous but rather be broken and patchy and in the form of sheens and streamers
- Shoreline resources – Low, because a small length of shoreline would be impacted in areas of high value and sensitivity

**Table 4-2:** Socio-economic risk factor ranks for the **Worst Case Discharge of 7,000 bbl** of light fuel oil from the *Panam*.

| Risk Factor                                 | Risk Score |        |      | Explanation of Risk Score   | Final Score |
|---|------------|--------|------|---|-------------|
| 4A-1: Water Column Probability SRAR Oiling  | Low        | Medium | High | N/A: Only available for modeled vessels   | Low         |
| 4A-2: Water Column Degree SRAR Oiling       | Low        | Medium | High | The mean volume of water contaminated above 1 ppb was 67 mi <sup>2</sup> of the upper 33 feet of the water column |             |
| 4B-1: Water Surface Probability SRAR Oiling | Low        | Medium | High | N/A: Only available for modeled vessels   | High        |
| 4B-2: Water Surface Degree SRAR Oiling      | Low        | Medium | High | The mean area of water contaminated above 0.01 g/m <sup>2</sup> was 13,900 mi <sup>2</sup>                        |             |
| 4C-1: Shoreline Probability SRAR Oiling     | Low        | Medium | High | N/A: Only available for modeled vessels   | Low         |
| 4C-2: Shoreline Degree SRAR Oiling          | Low        | Medium | High | The length of shoreline contaminated by at least 1 g/m <sup>2</sup> was 1 mi                                      |             |

For the Most Probable Discharge of 700 bbl, the socio-economic risk from potential releases of light fuel oil from the *Panam* is summarized as listed below and indicated in the far-right column in Table 4-3:

- Water column resources – Low, because a relatively small area of water column would be impacted in fishing areas
- Water surface resources – Medium, because a moderate area of offshore water surface would be covered in an area with shipping lanes and fishing activities. It should be noted that oil on the surface will not be continuous but rather be broken and patchy and in the form of sheens and streamers
- Shoreline resources – Low, because a small length of shoreline would be impacted in areas of high value and sensitivity

**Table 4-3:** Socio-economic risk factor ranks for the **Most Probable Discharge of 700 bbl** of light fuel oil from the *Panam*.

| Risk Factor                                 | Risk Score |        |      | Explanation of Risk Score  | Final Score |
|---|------------|--------|------|--|-------------|
| 4A-1: Water Column Probability SRAR Oiling  | Low        | Medium | High | N/A: Only available for modeled vessels  | Low         |
| 4A-2: Water Column Degree SRAR Oiling       | Low        | Medium | High | The mean volume of water contaminated above 1 ppb was 7 mi <sup>2</sup> of the upper 33 feet of the water column |             |
| 4B-1: Water Surface Probability SRAR Oiling | Low        | Medium | High | N/A: Only available for modeled vessels  | Med         |
| 4B-2: Water Surface Degree SRAR Oiling      | Low        | Medium | High | The mean area of water contaminated above 0.01 g/m <sup>2</sup> was 4,600 mi <sup>2</sup>                        |             |
| 4C-1: Shoreline Probability SRAR Oiling     | Low        | Medium | High | N/A: Only available for modeled vessels  | Low         |
| 4C-2: Shoreline Degree SRAR Oiling          | Low        | Medium | High | The length of shoreline contaminated by at least 1 g/m <sup>2</sup> was 0 mi                                     |             |

## SECTION 5: OVERALL RISK ASSESSMENT AND RECOMMENDATIONS FOR ASSESSMENT, MONITORING OR REMEDIATION

The overall risk assessment for the *Panam* is comprised of a compilation of several components that reflect the best available knowledge about this particular site. Those components are reflected in the previous sections of this document and are:

- Vessel casualty information and how site formation processes have worked on this vessel
- Ecological resources at risk
- Socio-economic resources at risk
- Other complicating factors (war graves, other hazardous cargo, etc.)

Table 5-1 summarizes the screening-level risk assessment scores for the different risk factors, as discussed in the previous sections. As noted in Sections 3 and 4, each of the ecological and socio-economic risk factors each has two components, probability and degree. Of those two, degree is given more weight in deciding the combined score for an individual factor, e.g., a high probability and medium degree score would result in a medium overall for that factor. Please note: The probability of oiling cannot be determined using the regression curves; probability can only be determined from the 200 model runs. Thus, the modeling results and regression curves for the *Lancing* were used to estimate the values used in the risk scoring for the **degree of oiling only**.

In order to make the scoring more uniform and replicable between wrecks, a value was assigned to each of the 7 criteria. This assessment has a total of 7 criteria (based on table 5-1) with 3 possible scores for each criteria (L, M, H). Each was assigned a point value of L=1, M=2, H=3. The total possible score is 21 points, and the minimum score is 7. The resulting category summaries are:

|                 |       |
|-----------------|-------|
| Low Priority    | 7-11  |
| Medium Priority | 12-14 |
| High Priority   | 15-21 |

For the Worst Case Discharge, the *Panam* scores Medium with 12 points; for the Most Probable Discharge, the *Panam* scores Low with 9 points. Under the National Contingency Plan, the U.S. Coast Guard and the Regional Response Team have the primary authority and responsibility to plan, prepare for, and respond to oil spills in U.S. waters. Based on the technical review of available information, NOAA proposes the following recommendations for the *Panam*. The final determination rests with the U.S. Coast Guard.

| <i>Panam</i> | Possible NOAA Recommendations  |
|--------------|--|
|              | Wreck should be considered for further assessment to determine the vessel condition, amount of oil onboard, and feasibility of oil removal action  |
| ✓            | Location is unknown; Use surveys of opportunity to attempt to locate this vessel and gather more information on the vessel condition   |
|              | Conduct active monitoring to look for releases or changes in rates of releases   |
| ✓            | Be noted in the Area Contingency Plans so that if a mystery spill is reported in the general area, this vessel could be investigated as a source   |
| ✓            | Conduct outreach efforts with the technical and recreational dive community as well as commercial and recreational fishermen who frequent the area, to gain awareness of changes in the site |

**Table 5-1:** Summary of risk factors for the *Panam*.

| Vessel Risk Factors         |   | Data Quality Score | Comments  |      | Risk Score    |
|-----------------------------|---|--------------------|---|------|---------------|
| Pollution Potential Factors | A1: Oil Volume (total bbl)                              | Medium             | Maximum of 6,734 bbl, not reported to be leaking  |      | Med           |
|                             | A2: Oil Type  | High               | Bunker oil is diesel oil, a Group II oil type   |      |               |
|                             | B: Wreck Clearance                                      | High               | Vessel not reported as cleared  |      |               |
|                             | C1: Burning of the Ship                                 | High               | No fire was reported  |      |               |
|                             | C2: Oil on Water  | High               | No oil was reported on the water  |      |               |
|                             | D1: Nature of Casualty                                  | High               | Two torpedo detonations   |      |               |
|                             | D2: Structural Breakup                                  | Low                | Unknown structural breakup  |      |               |
| Archaeological Assessment   | Archaeological Assessment                               | Medium             | Detailed sinking records of this ship were located, but no site reports exist, assessment is believed to be moderately accurate |      | Not Scored    |
| Operational Factors         | Wreck Orientation                                       | Low                | Unknown   |      | Not Scored    |
|                             | Depth   | Low                | >450 ft   |      |               |
|                             | Visual or Remote Sensing Confirmation of Site Condition | Low                | Location unknown  |      |               |
|                             | Other Hazardous Materials Onboard                       | High               | No  |      |               |
|                             | Munitions Onboard                                       | High               | Munitions for onboard weapons   |      |               |
|                             | Gravesite (Civilian/Military)                           | High               | Yes   |      |               |
|                             | Historical Protection Eligibility (NHPA/SMCA)           | High               | NHPA and possibly SMCA  |      |               |
|                             |   |                    |   | WCD  | Most Probable |
| Ecological Resources        | 3A: Water Column Resources                              | High               | Area of potential impact are relatively small and far offshore where sensitive resources are less concentrated                  | Med  | Low           |
|                             | 3B: Water Surface Resources                             | High               | Very high use by marine birds and sea turtles in coastal and offshore waters  | Med  | Low           |
|                             | 3C: Shore Resources                                     | High               | Very low risk of shoreline oiling   | Low  | Low           |
| Socio-Economic Resources    | 4A: Water Column Resources                              | High               | Relatively small area of water column could be impacted in fishing areas  | Low  | Low           |
|                             | 4B: Water Surface Resources                             | High               | Relatively large area of offshore water surface could be impacted in an area with shipping lanes and fishing activities         | High | Med           |
|                             | 4C: Shore Resources                                     | High               | Small length of shoreline could be impacted in areas of high value and sensitivity  | Low  | Low           |
| Summary Risk Scores         |   |                    |   | 12   | 9             |