

Office of National Marine Sanctuaries
National Oceanic and Atmospheric Administration



Ocean Guardian



NATIONAL
MARINE
SANCTUARY
FOUNDATION

DIVE CLUB

A vibrant underwater photograph of the Flower Garden Banks National Marine Sanctuary. The scene is dominated by large, rounded, light-colored coral mounds with a bumpy texture. Numerous small, dark-colored fish are swimming in the clear blue water above the coral. In the foreground, several bright orange fish are visible near the coral. A crab is also seen on the left side of the image. The overall atmosphere is bright and clear, showcasing the rich biodiversity of the sanctuary.

Flower Garden Banks National Marine Sanctuary

FLOWER GARDEN BANKS NATIONAL MARINE SANCTUARY

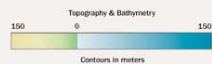
Contact Information
1200 Briarcrest Drive
Suite 4000
Bryan, TX 77802
(979) 846-5942
flowergarden.noaa.gov

Habitats
• Coral reefs
• Algal-sponge communities
• Brine seep

• Sand flats
• Pelagic, open ocean
• Deepwater coral communities

Key Species
• Star and Brain coral
• Grouper
• Manta ray

• Hammerhead shark
• Loggerhead sea turtle
• Whale shark



Map Key

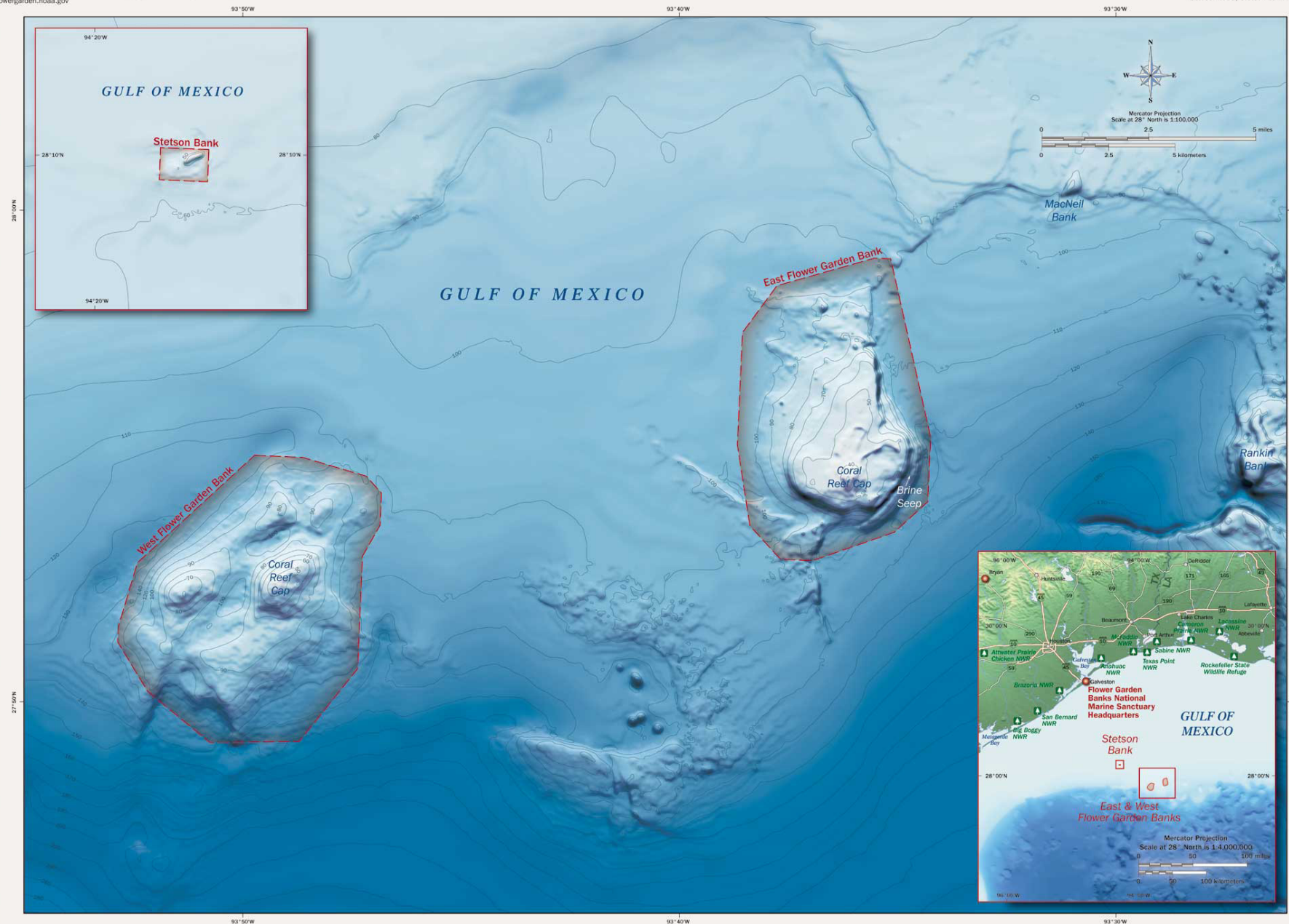
- National Marine Sanctuary
- Marine Sanctuary Office
- Other Park
- NWR National Wildlife Refuge



FLOWER GARDEN BANKS NATIONAL MARINE SANCTUARY

Location
Roughly 110 miles south of the Texas-Louisiana border

Protected Area
56-square miles
Designation
January 1992
October 1996, Stetson Bank



Welcome to Flower Garden Banks National Marine Sanctuary!



Many ocean creatures, like this manta ray, depend on the sanctuary.

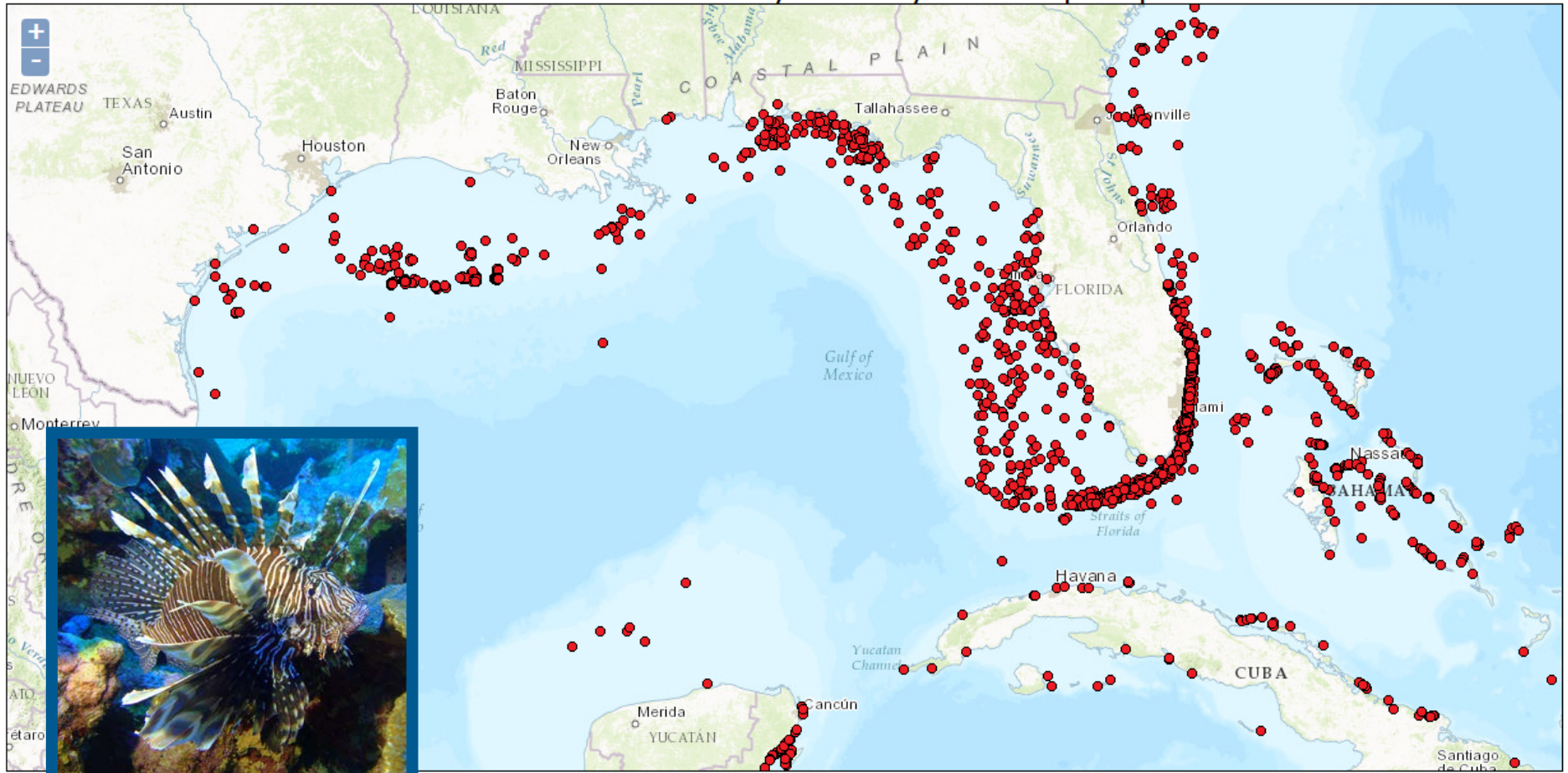
**Lionfish are invading national
marine sanctuaries.**



Lionfish are an invasive species in United States waters.

2015

Note: Time series reflects NAS data and may not accurately reflect actual species spread.



These data are preliminary or provisional and are subject to revision. They are being provided to meet the need for timely best science. The data have not received final approval by the U.S. Geological Survey (USGS) and are provided on the condition that neither the USGS nor the U.S. Government shall be held liable for any damages resulting from the authorized or unauthorized use of the data.

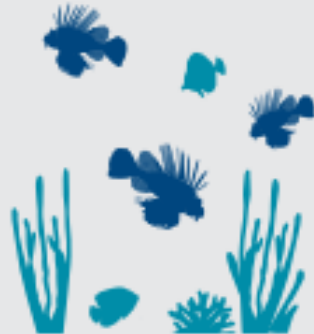
Lionfish have huge appetites that threaten coral reefs.



INVASIVE SPECIES THREATEN CORAL REEFS



BEFORE INVASION



AFTER INVASION

OVER 100
PREY FISH SPECIES

1,000 lionfish can consume

5 MILLION
PREY FISH IN 1 YEAR

0
KNOWN PREDATORS

Lionfish in the Sanctuary

What can you do?





STOP THE INVASION



**THIS IS WHAT
WE STAND TO LOSE!**

Office of National Marine Sanctuaries
National Oceanic and Atmospheric Administration



NATIONAL MARINE
SANCTUARIES

FLOWER
GARDEN BANKS

<http://flowergarden.noaa.gov/>

Additional Video Resources

Earth is Blue: On the Hunt for Lionfish

Ocean Today: Lionfish on the Loose

Earth is Blue: Lionfish Terror of the Coral Reefs